



GLORIA 18

NEW

MATERIAL:

- Vertical collectors in painted mild steel \varnothing 30 mm.
- Horizontal heating elements in painted mild steel \varnothing 18 mm.

FIXING KIT:

Brackets, airvent, hexagonal tool, plugs and screws for mounting suitable for use on compact or hollow brick, user notice.
The kit is certified from TÜV in compliance with VDI 6036-class 4.

PACKAGING:

Carton angular and profiles protected by a recyclable film in polyethylene. User notice included.

PAINTING PROCESS:

Painted with ecological epoxy powders. (Certificate DIN 55900-1,-2)

COLOURS:

Radiator and accessories: standard white colour RAL 9010-R01.
For other colours see Colour chart chapter.

ACCESSORIES:

See Accessories chapter

Functioning:	<input checked="" type="checkbox"/> Hot water	<input checked="" type="checkbox"/> Dual energy
--------------	-----------------------------------------------	-------------------------------------------------

P. Max: 8 bar	Functioning: hot water	T. Max: 110° C	Connections: 2 x 1/2" gas - 1 x 1/2" gas for airvent
---------------	------------------------	----------------	------------------------------------------------------

CERTIFICATIONS



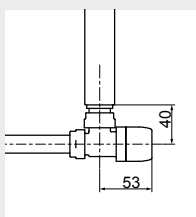
ACCESSORIES

Kristal valve square With thermostatic option White R01 - ral 9010

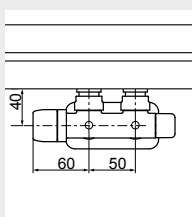
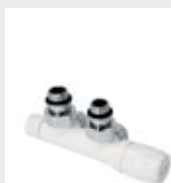


Copper conn. \varnothing 12/14/15
Art. nr. 5991990311161

Multilayer conn. \varnothing 16
Art. nr. 5991990311160



Quotes for square Kristal valves
with thermostatic option

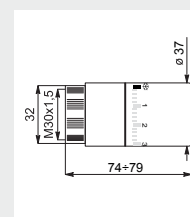


Quotes for square Kristal valves
with thermostatic option

Kristal valve square Pipe centres 50 mm right white R01 - ral 9010

Copper conn. \varnothing 12/14/15
Art. nr. 5991990311186

Multilayer conn. \varnothing 16
Art. nr. 5991990311185



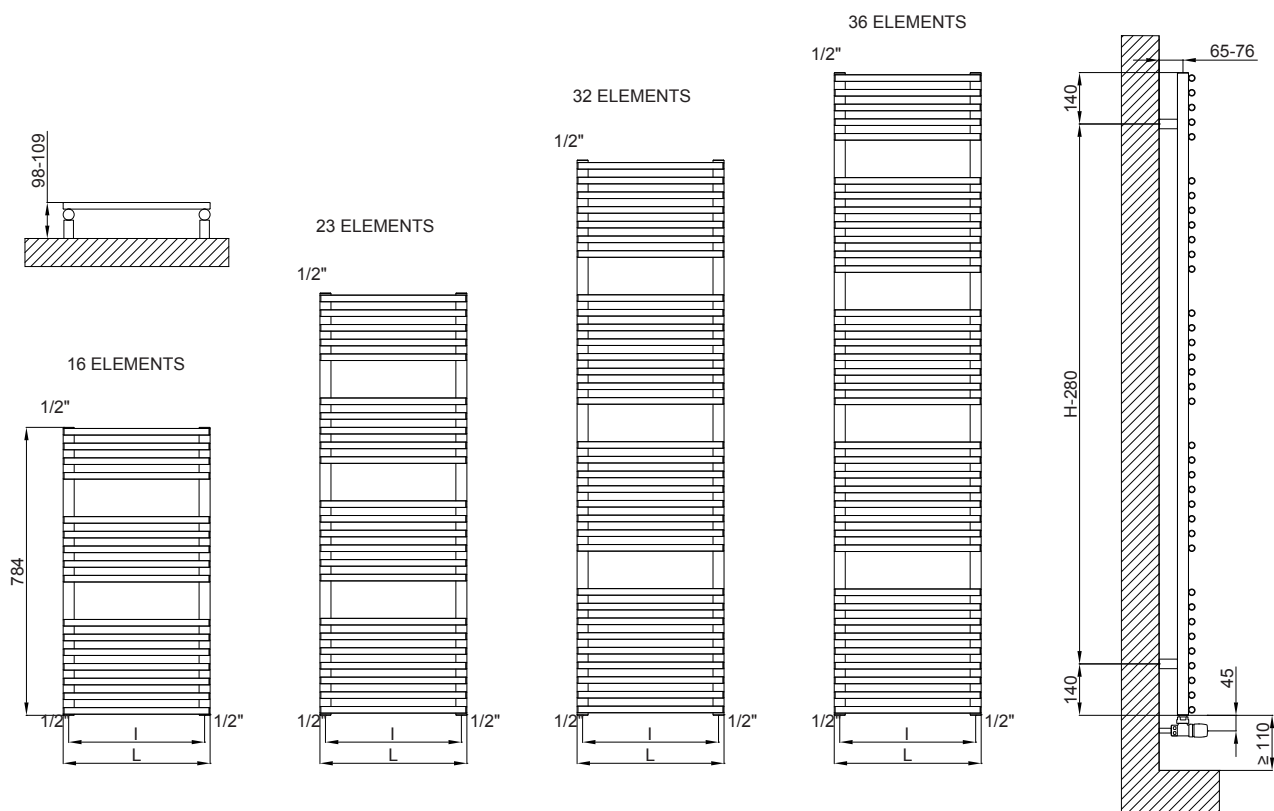
Thermostatic head quotes

White thermostatic head

(Kit 2 pieces)
Art. nr. 5035270710016

If ordered separately from the radiator, the accessories are available in standard white only.

Accessories and spare parts - see Accessories chapter



Quotes for Kristal valves

GLORIA 18

Height [mm]	WIDTH L [mm]	Pipe Centres I [mm]	Art. nr.	Dry Weight [Kg]	Surface [m ²]	Water content [lt]	Thermal output [Watt]		Exp. n	Dual energy kit [Watt]
							$\Delta t=50^{\circ}\text{C}$	$\Delta t=30^{\circ}\text{C}$		
780	430	400	3551666100140	5,1	0,537	2,2	347	192	1,1628	400
	480	450	3551666100141	5,5	0,582	2,4	374	208	1,1533	400
	530	500	3551666100142	5,6	0,627	2,6	413	229	1,1540	500
	580	550	3551666100143	6,3	0,673	2,7	429	240	1,1344	500
1150	430	400	3551666100145	7,3	0,77	3,2	477	259	1,1959	600
	480	450	3551666100146	7,9	0,84	3,4	519	283	1,1905	600
	530	500	3551666100147	8	0,906	3,7	573	313	1,1825	700
	580	550	3551666100148	9,1	0,971	3,8	604	331	1,1797	700
1500	430	400	3551666100150	10	1,063	4,4	622	335	1,2128	700
	480	450	3551666100151	10,8	1,154	4,7	680	366	1,2100	700
	530	500	3551666100152	11	1,238	5	750	406	1,2012	900
	580	550	3551666100153	12,4	1,335	5,3	796	430	1,2045	900
1750	430	400	3551666100155	11,4	1,205	5	728	390	1,2238	900
	480	450	3551666100156	12,3	1,307	5,3	797	427	1,2229	900
	530	500	3551666100157	12,5	1,409	5,7	880	472	1,2211	900
	580	550	3551666100158	14,1	1,511	6	935	501	1,2209	900

Art. nr. are referred to colour WHITE R01 - RAL 9010 version.

For output at different Δt than 50°C , please refer to the following formula: $\text{desired output} = \text{output at } \Delta t 50^{\circ}\text{C} \times (\text{desired } \Delta t/50)^n$