



ALICE 22 TANDEM HORIZONTAL

NEW

MATERIAL:

- Horizontal collectors in painted mild steel ø 30 mm.
- Double horizontal heating elements in painted mild steel ø 22 mm.

FIXING KIT:

Brackets, airvent, hexagonal tool, plugs and screws for mounting suitable for use on compact or hollow brick walls, user notice. The kit is certified from TÜV in compliance with VDI 6036-class 4. hollow brick walls, user notice.

PACKAGING:

Carton angular and profiles protected by a recyclable film in polyethylene. User notice included.

PAINTING PROCESS:

Painted with ecological epoxy powders. (Certificate DIN 55900-1,-2)

COLOURS:

Radiator and accessories: standard white colour RAL

9010-R01.

For other colours see Colour chart chapter.

ACCESSORIES

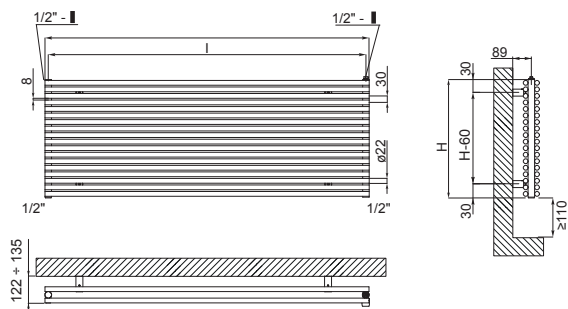
See Accessories chapter

P. Max: 8 bar	Functioning: hot water	T. Max: 110° C	Connections: 2 x 1/2" gas - 1 x 1/2" gas for airvent
---------------	------------------------	----------------	--

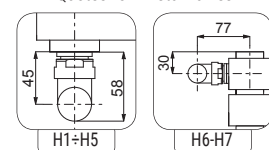
WIDTH L [mm]	400	500	600	700	800	1000	1200	1400	1500
Dry Weight per section [kg]	0,66	0,81	0,96	1,11	1,27	1,57	1,87	2,18	2,33
Element Water content [lt]	0,26	0,319	0,376	0,433	0,490	0,603	0,716	0,830	0,886
Element surface [m2]	0,06	0,075	0,089	0,102	0,116	0,144	0,172	0,199	0,213
Pipe Centres I [mm] (H1 only)	370	470	570	670	770	970	1170	1370	1470

For output at different Δt than 50°C, please refer to the following formula:
desired output = output at Δt 50°C x (desired Δt /50)ⁿ

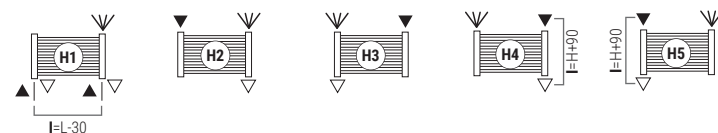
WIDTH L [mm]	1600	1700	1800	1900	2000	2100	2200	2300	2500
Dry Weight per section [kg]	2,48	2,63	2,78	2,94	3,09	3,24	3,39	3,54	3,85
Element Water content [lt]	0,943	1,000	1,057	1,113	1,170	1,227	1,283	1,340	1,454
Element surface [m2]	0,227	0,241	0,254	0,268	0,282	0,296	0,310	0,324	0,351
Pipe Centres I [mm] (H1 only)	1570	1670	1770	1870	1970	2070	2170	2270	2470



Quotes for Kristal valves



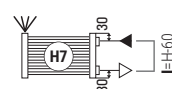
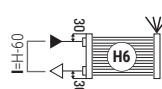
STANDARD CONNECTIONS WITHOUT SURCHARGE



Legenda=



SPECIAL CONNECTIONS (WITH SURCHARGE)



Always specify the kind of connection needed when ordering.
Bidirectional pipe connection not available

HOW TO ORDER THE RADIATOR ALICE 22 TANDEM HORIZONTAL

ARTICLE NR. STRUCTURE	Radiator model	Elements nr.	WIDTH in cm	Article code of the connection	Article code of the colour	Constant value
AAAA	BB	CCC	DDD	EEE	A	

EXAMPLE	Radiator model E.g.: Alice 22 tandem horizontal	Numero elements E.g.: 12 elements	WIDTH in cm Example: 1200 mm	Article code of the connection Example: connection H4	Article code of the colour Example: S16 - Canary	Constant value
AT22	12	120	H04	S16	A	

EXAMPLE OF ARTICLE CODE CREATION

In the case of a radiator:

AT22 ALICE 22 TANDEM HORIZONTAL

12 12 elements (see the table shown on the side)

120 WIDTH 1200 mm (see the table shown on the side)

H04 connection H4

S16 colour S16- Canary

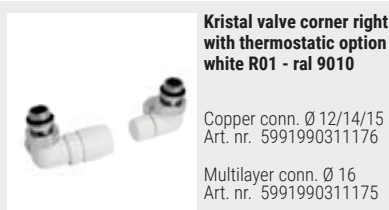
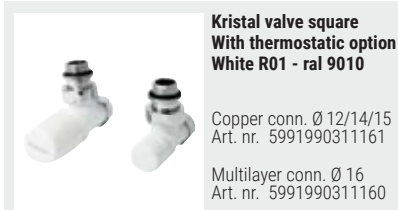
A (Constant value)

The article code will be:

AT22 12 120 H04 S16 A

ACCESSORIES

If ordered separately from the radiator, the accessories are available in standard white only.



ALICE 22 TANDEM HORIZONTAL

All intermediate sizes are available for widths from 5 to 42 elements and heights from 500 to 2500 mm

WIDTH L [mm]		400	500	600	700	800	1000	1200	1400	1500	Exp. n
Height H [mm]	N° El.	Watt Δt=50°C	Watt Δt=50°C	Watt Δt=50°C	Watt Δt=50°C	Watt Δt=50°C	Watt Δt=50°C	Watt Δt=50°C	Watt Δt=50°C	Watt Δt=50°C	
150	5	182	227	272	318	363	454	545	635	681	1,2383
180	6	210	262	315	367	420	525	630	735	787	1,2376
210	7	238	298	357	417	476	595	714	833	893	1,2370
240	8	264	329	395	461	527	659	791	922	988	1,2364
270	9	292	365	438	511	584	730	876	1022	1095	1,2358
300	10	320	400	480	560	640	801	961	1121	1201	1,2352
330	11	348	435	521	608	695	869	1043	1217	1304	1,2346
360	12	374	468	562	655	749	936	1123	1311	1404	1,2340
390	13	401	502	602	702	803	1003	1204	1405	1505	1,2334
420	14	428	535	642	749	856	1069	1283	1497	1604	1,2328
450	15	453	567	680	793	906	1133	1360	1586	1700	1,2321
480	16	479	598	718	838	957	1197	1436	1675	1795	1,2315
510	17	504	630	756	882	1008	1260	1512	1764	1890	1,2309
540	18	528	661	793	925	1057	1321	1585	1850	1982	1,2303
570	19	553	691	829	968	1106	1382	1659	1935	2074	1,2297
600	20	577	722	866	1010	1155	1443	1732	2021	2165	1,2291
630	21	601	751	901	1051	1202	1502	1803	2103	2253	1,2285
660	22	624	780	936	1093	1249	1561	1873	2185	2341	1,2281
690	23	647	809	971	1133	1295	1618	1942	2266	2427	1,2275
720	24	670	838	1005	1173	1341	1676	2011	2346	2514	1,2269
750	25	693	866	1039	1212	1386	1732	2078	2425	2598	1,2261
780	26	715	894	1073	1252	1430	1788	2146	2503	2682	1,2255
810	27	737	922	1106	1290	1474	1843	2212	2580	2765	1,2249
840	28	759	949	1139	1329	1518	1898	2278	2657	2847	1,2243
870	29	780	975	1170	1365	1561	1951	2341	2731	2926	1,2237
900	30	802	1002	1203	1403	1604	2004	2405	2806	3007	1,2231
930	31	823	1029	1234	1440	1646	2057	2468	2880	3086	1,2225
960	32	843	1054	1265	1476	1687	2108	2530	2952	3163	1,2219
990	33	864	1080	1296	1512	1728	2160	2592	3024	3240	1,2213
1020	34	884	1106	1327	1548	1769	2211	2653	3095	3317	1,2207
1050	35	904	1131	1357	1583	1809	2261	2713	3166	3392	1,2203
1080	36	924	1155	1386	1617	1848	2310	2772	3234	3465	1,2197
1110	37	944	1179	1415	1651	1887	2359	2831	3302	3538	1,2191
1140	38	963	1204	1445	1685	1926	2408	2889	3371	3612	1,2185
1170	39	982	1228	1473	1719	1964	2455	2947	3438	3683	1,2178
1200	40	1001	1251	1501	1751	2002	2502	3002	3503	3753	1,2172
1230	41	1017	1272	1526	1780	2035	2543	3052	3561	3815	1,2178
1260	42	1035	1294	1553	1811	2070	2588	3105	3623	3882	1,2178

WIDTH L [mm]		1600	1700	1800	1900	2000	2100	2200	2300	2500	Exp. n
Height H [mm]	N° El.	Watt Δt=50°C	Watt Δt=50°C	Watt Δt=50°C	Watt Δt=50°C	Watt Δt=50°C	Watt Δt=50°C	Watt Δt=50°C	Watt Δt=50°C	Watt Δt=50°C	
150	5	726	772	817	862	908	953	999	1044	1135	1,2383
180	6	840	892	945	997	1050	1102	1155	1207	1312	1,2376
210	7	952	1012	1071	1131	1190	1250	1309	1369	1488	1,2370
240	8	1054	1120	1186	1252	1318	1383	1449	1515	1647	1,2364
270	9	1167	1240	1313	1386	1459	1532	1605	1678	1824	1,2358
300	10	1281	1361	1441	1521	1601	1681	1761	1841	2001	1,2352
330	11	1390	1477	1564	1651	1738	1825	1912	1999	2173	1,2346
360	12	1498	1592	1685	1779	1872	1966	2060	2153	2341	1,2340
390	13	1606	1706	1806	1907	2007	2107	2208	2308	2509	1,2334
420	14	1711	1818	1925	2032	2139	2246	2353	2460	2674	1,2328
450	15	1813	1926	2039	2153	2266	2379	2493	2606	2833	1,2321
480	16	1914	2034	2154	2273	2393	2513	2632	2752	2991	1,2315
510	17	2016	2142	2268	2394	2520	2646	2772	2898	3150	1,2309
540	18	2114	2246	2378	2510	2642	2775	2907	3039	3303	1,2303
570	19	2212	2350	2488	2626	2765	2903	3041	3179	3456	1,2297
600	20	2310	2454	2598	2743	2887	3031	3176	3320	3609	1,2291
630	21	2403	2554	2704	2854	3004	3154	3305	3455	3755	1,2285
660	22	2497	2653	2809	2965	3122	3278	3434	3590	3902	1,2281
690	23	2589	2751	2913	3075	3236	3398	3560	3722	4046	1,2275
720	24	2681	2849	3016	3184	3351	3519	3686	3854	4189	1,2269
750	25	2771	2944	3117	3291	3464	3637	3810	3983	4330	1,2261
780	26	2861	3040	3219	3397	3576	3755	3934	4113	4470	1,2255
810	27	2949	3133	3318	3502	3686	3871	4055	4239	4608	1,2249
840	28	3037	3227	3417	3606	3796	3986	4176	4366	4745	1,2243
870	29	3121	3316	3511	3706	3901	4096	4291	4487	4877	1,2237
900	30	3207	3408	3608	3808	4009	4209	4410	4610	5011	1,2231
930	31	3291	3497	3703	3908	4114	4320	4525	4731	5143	1,2225
960	32	3373	3584	3795	4006	4217	4428	4638	4849	5271	1,2219
990	33	3455	3671	3887	4103	4319	4535	4751	4967	5399	1,2213
1020	34	3538	3759	3980	4201	4422	4643	4864	5085	5528	1,2207
1050	35	3618	3844	4070	4296	4522	4748	4974	5201	5653	1,2203
1080	36	3696	3927	4158	4389	4620	4851	5082	5313	5775	1,2197
1110	37	3774	4010	4246	4482	4718	4954	5190	5425	5897	1,2191
1140	38	3852	4093	4334	4575	4816	5056	5297	5538	6019	1,2185
1170	39	3929	4174	4420	4665	4911	5156	5402	5648	6139	1,2178
1200	40	4003	4253	4503	4754	5004	5254	5504	5754	6255	1,2172
1230	41	4069	4324	4578	4832	5087	5341	5595	5850	6358	1,2178
1260	42	4140	4399	4658	4917	5175	5434	5693	5952	6469	1,2178