



ALICE 18 HORIZONTAL

page 192



Radiators, convectors and ceiling-mounted radiant panels, hot water heating, fan assisted and mixed



EUROPEAN WARRANTY

MATERIAL:

- Vertical collectors in painted mild steel \varnothing 38 mm.
- Horizontal heating elements in painted mild steel \varnothing 18 mm.

FIXING KIT:

Brackets, airvent, hexagonal tool, plugs and screws for mounting suitable for use on compact or hollow brick walls, user notice.

PACKAGING:

Carton angular and profiles protected by a recyclable film in polyethylene. User notice included.

PAINTING PROCESS:

Painted with ecological epoxy powders. (Certificate DIN 55900-1,-2)

COLOURS:

Radiator and accessories: standard white colour RAL

9010-R01.

For other colours see Colour chart chapter.

ACCESSORIES

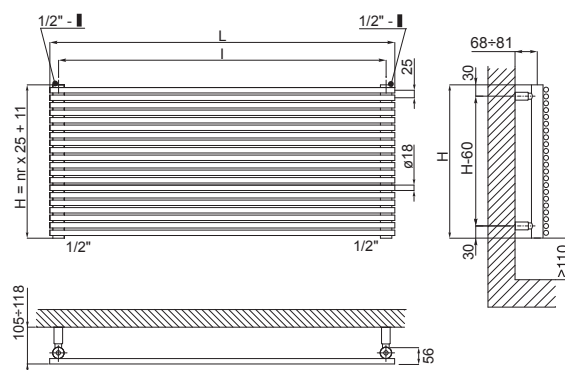
See Accessories chapter

P. Max: 8 bar	Functioning: hot water	T. Max: 110° C	Connections: 2 x 1/2" gas - 1 x 1/2" gas for airvent
---------------	------------------------	----------------	--

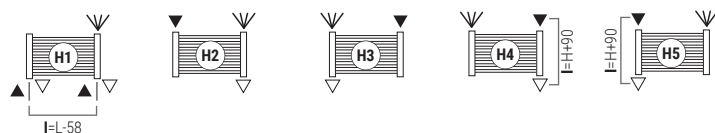
WIDTH L [mm]	400	500	600	700	800	1000	1200	1400	1500
Dry Weight per section [kg]	0,253	0,303	0,353	0,403	0,453	0,552	0,652	0,751	0,801
Element Water content [lt]	0,125	0,145	0,164	0,184	0,203	0,241	0,279	0,317	0,336
Element surface [m2]	0,029	0,035	0,040	0,046	0,051	0,063	0,074	0,085	0,091
Pipe Centres I [mm] (H1 only)	342	442	542	642	742	942	1142	1342	1442

For output at different Δt than 50°C, please refer to the following formula:
desired output = output at Δt 50°C x (desired Δt /50)ⁿ

WIDTH L [mm]	1600	1700	1800	1900	2000	2100	2200	2300	2500
Dry Weight per section [kg]	0,851	0,901	0,950	1,000	1,050	1,100	1,149	1,199	1,299
Element Water content [lt]	0,356	0,375	0,394	0,413	0,432	0,451	0,470	0,489	0,528
Element surface [m2]	0,096	0,102	0,108	0,113	0,119	0,126	0,130	0,136	0,147
Pipe Centres I [mm] (H1 only)	1542	1642	1742	1842	1942	2042	2142	2242	2442



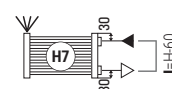
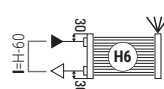
STANDARD CONNECTIONS WITHOUT SURCHARGE



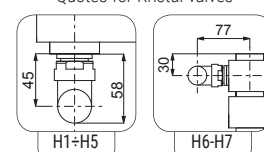
Legenda=



SPECIAL CONNECTIONS (WITH SURCHARGE)



Quotes for Kristal valves



HOW TO ORDER THE RADIATOR ALICE 18 HORIZONTAL

Always specify the kind of connection needed when ordering.
Bidirectional pipe connection not available

ARTICLE NR. STRUCTURE						
Radiator model		Elements nr.	WIDTH in cm	Article code of the connection	Article code of the colour	Constant value
AAAA	BB	CCC	DDD	EEE	A	

EXAMPLE						
Radiator model E.g.: Alice 18 horizontal		Numero elements E.g.: 12 elements	WIDTH in cm Example: 1200 mm	Article code of the connection Example: connection H4	Article code of the colour Example: S16 - Canary	Constant value
AL18	12	120	H04	S16	A	

EXAMPLE OF ARTICLE CODE CREATION

In the case of a radiator:

AL18 ALICE 18 HORIZONTAL

12 12 elements (see the table shown on the side)

120 WIDTH 1200 mm (see the table shown on the side)

H04 connection H4

S16 colour S16- Canary

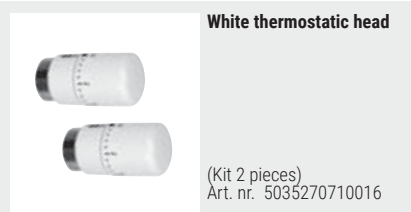
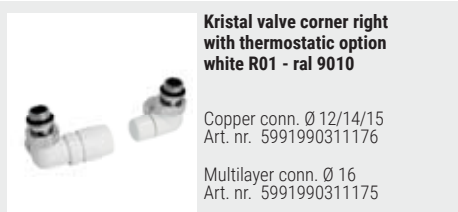
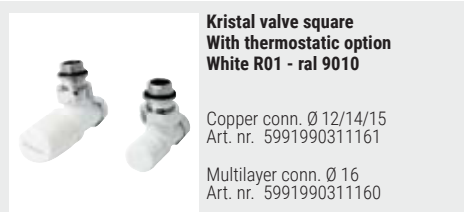
A (Constant value)

The article code will be:

AL18 12 120 H04 S16 A

ACCESSORIES

If ordered separately from the radiator, the accessories are available in standard white only.



ALICE 18 HORIZONTAL

WIDTH L [mm]		400	500	600	700	800	1000	1200	1400	1500	Exp. n
Height H [mm]	N° El.	Watt Δt=50°C	Watt Δt=50°C	Watt Δt=50°C	Watt Δt=50°C	Watt Δt=50°C	Watt Δt=50°C	Watt Δt=50°C	Watt Δt=50°C	Watt Δt=50°C	
136	5	77	96	115	134	154	192	230	269	288	1,2809
161	6	94	117	140	164	187	234	281	328	351	1,2795
186	7	110	138	165	193	220	275	330	385	413	1,2781
211	8	127	159	190	222	254	317	380	444	476	1,2767
236	9	144	180	215	251	287	359	431	503	539	1,2753
261	10	160	201	241	281	321	401	481	561	602	1,2739
286	11	177	222	266	310	354	443	532	620	665	1,2725
311	12	194	242	290	339	387	484	581	678	726	1,2711
336	13	210	263	316	368	421	526	631	736	789	1,2697
361	14	227	284	341	398	454	568	682	795	852	1,2683
386	15	244	305	365	426	487	609	731	853	914	1,2669
411	16	260	325	390	455	520	650	780	910	975	1,2655
436	17	276	346	415	484	553	691	829	967	1037	1,2641
461	18	293	366	439	512	586	732	878	1025	1098	1,2627
486	19	309	386	463	540	618	772	926	1081	1158	1,2613
511	20	325	407	488	569	650	813	976	1138	1220	1,2599
536	21	341	427	512	597	682	853	1024	1194	1280	1,2585
561	22	357	447	536	625	714	893	1072	1250	1340	1,2571
586	23	373	466	559	652	746	932	1118	1305	1398	1,2557
611	24	389	486	583	680	778	972	1166	1361	1458	1,2543
636	25	404	506	607	708	809	1011	1213	1415	1517	1,2530
661	26	420	525	629	734	839	1049	1259	1469	1574	1,2516
686	27	435	544	653	762	870	1088	1306	1523	1632	1,2502
711	28	450	563	676	788	901	1126	1351	1576	1689	1,2488
736	29	466	582	698	815	931	1164	1397	1630	1746	1,2474
761	30	481	601	721	841	962	1202	1442	1683	1803	1,2460
811	32	510	638	766	893	1021	1276	1531	1786	1914	1,2432
861	34	540	675	809	944	1079	1349	1619	1889	2024	1,2404
911	36	568	711	853	995	1137	1421	1705	1989	2132	1,2376
961	38	596	746	895	1044	1193	1491	1789	2087	2237	1,2348
1011	40	624	781	937	1093	1249	1561	1873	2185	2342	1,2320
1061	42	652	815	977	1140	1303	1629	1955	2281	2444	1,2292
1136	45	678	848	1018	1187	1357	1696	2035	2374	2544	1,2264
1261	50	755	944	1133	1322	1510	1888	2266	2643	2832	1,2180
1386	55	816	1020	1224	1428	1632	2040	2448	2856	3060	1,2110
1511	60	874	1093	1311	1530	1748	2185	2622	3059	3278	1,2040
1636	65	928	1161	1393	1625	1857	2321	2785	3249	3482	1,1970
1761	70	980	1225	1470	1715	1960	2450	2940	3430	3675	1,1900

WIDTH L [mm]		1600	1700	1800	1900	2000	2100	2200	2300	2500	Exp. n
Height H [mm]	N° El.	Watt Δt=50°C	Watt Δt=50°C	Watt Δt=50°C	Watt Δt=50°C	Watt Δt=50°C	Watt Δt=50°C	Watt Δt=50°C	Watt Δt=50°C	Watt Δt=50°C	
136	5	307	326	346	365	384	403	422	442	480	1,2809
161	6	374	398	421	445	468	491	515	538	585	1,2795
186	7	440	468	495	523	550	578	605	633	688	1,2781
211	8	507	539	571	602	634	666	697	729	793	1,2767
236	9	574	610	646	682	718	754	790	826	898	1,2753
261	10	642	682	722	762	802	842	882	922	1003	1,2739
286	11	709	753	797	842	886	930	975	1019	1108	1,2725
311	12	774	823	871	920	968	1016	1065	1113	1210	1,2711
336	13	842	894	947	999	1052	1105	1157	1210	1315	1,2697
361	14	909	966	1022	1079	1136	1193	1250	1306	1420	1,2683
386	15	974	1035	1096	1157	1218	1279	1340	1401	1523	1,2669
411	16	1040	1105	1170	1235	1300	1365	1430	1495	1625	1,2655
436	17	1106	1175	1244	1313	1382	1451	1520	1589	1728	1,2641
461	18	1171	1244	1318	1391	1464	1537	1610	1684	1830	1,2627
486	19	1235	1312	1390	1467	1544	1621	1698	1776	1930	1,2613
511	20	1301	1382	1463	1545	1626	1707	1789	1870	2033	1,2599
536	21	1365	1450	1535	1621	1706	1791	1877	1962	2133	1,2585
561	22	1429	1518	1607	1697	1786	1875	1965	2054	2233	1,2571
586	23	1491	1584	1678	1771	1864	1957	2050	2144	2330	1,2557
611	24	1555	1652	1750	1847	1944	2041	2138	2236	2430	1,2543
636	25	1618	1719	1820	1921	2022	2123	2224	2325	2528	1,2530
661	26	1678	1783	1888	1993	2098	2203	2308	2413	2623	1,2516
686	27	1741	1850	1958	2067	2176	2285	2394	2502	2720	1,2502
711	28	1802	1914	2027	2139	2252	2365	2477	2590	2815	1,2488
736	29	1862	1979	2095	2212	2328	2444	2561	2677	2910	1,2474
761	30	1923	2043	2164	2284	2404	2524	2644	2765	3005	1,2460
811	32	2042	2169	2297	2424	2552	2680	2807	2935	3190	1,2432
861	34	2158	2293	2428	2563	2698	2833	2968	3103	3373	1,2404
911	36	2274	2416	2558	2700	2842	2984	3126	3268	3553	1,2376
961	38	2386	2535	2684	2833	2982	3131	3280	3429	3728	1,2348
1011	40	2498	2654	2810	2966	3122	3278	3434	3590	3903	1,2320
1061	42	2606	2769	2932	3095	3258	3421	3584	3747	4073	1,2292
1136	45	2714	2883	3053	3222	3392	3562	3731	3901	4240	1,2264
1261	50	3021	3210	3398	3587	3776	3965	4154	4342	4720	1,2180
1386	55	3264	3468	3672	3876	4080	4284	4488	4692	5100	1,2110
1511	60	3496	3715	3933	4152	4370	4589	4807	5026	5463	1,2040
1636	65	3714	3946	4178	4410	4642	4874	5106	5338	5803	1,1970
1761	70	3920	4165	4410	4655	4900	5145	5390	5635	6125	1,1900