



KORA

NEW

MATERIAL:

- Vertical collectors in painted mild steel 30x30 mm.
- Horizontal heating elements in painted mild steel 50x10 mm.

FIXING KIT:

Brackets, airvent, hexagonal tool, plugs and screws for mounting suitable for use on compact or hollow brick, user notice.

The kit is certified from TÜV in compliance with VDI 6036-class 4.

PACKAGING:

Carton angular and profiles protected by a recyclable film in polyethylene. User notice included.

PAINTING PROCESS:

Painted with ecological epoxy powders. (Certificate DIN 55900-1,-2)

COLOURS:

Radiator and accessories: standard white colour RAL 9010-R01.
For other colours see Colour chart chapter.

ACCESSORIES:

See Accessories chapter

| | | |
|--------------|---|--------------------------------------|
| Functioning: | <input checked="" type="checkbox"/> Hot water | <input type="checkbox"/> Dual energy |
|--------------|---|--------------------------------------|

| | | | |
|---------------|------------------------|----------------|--|
| P. Max: 4 bar | Functioning: hot water | T. Max: 110° C | Connections: 2 x 1/2" gas - 1 x 1/2" gas for airvent |
|---------------|------------------------|----------------|--|

CERTIFICATIONS



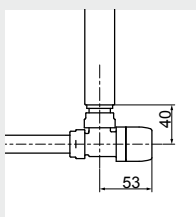
ACCESSORIES

Kristal valve square With thermostatic option White R01 - ral 9010



Copper conn. Ø 12/14/15
Art. nr. 5991990311161

Multilayer conn. Ø 16
Art. nr. 5991990311160



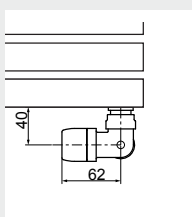
Quotes for square Kristal valves
with thermostatic option



Kristal valve corner with thermostatic option White R01 - ral 9010

Copper conn. Ø 12/14/15
Art. nr. 5991990311176

Multilayer conn. Ø 16
Art. nr. 5991990311175

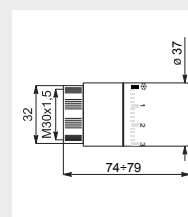


Quotes for corner Kristal valves with
thermostatic option



White thermostatic head

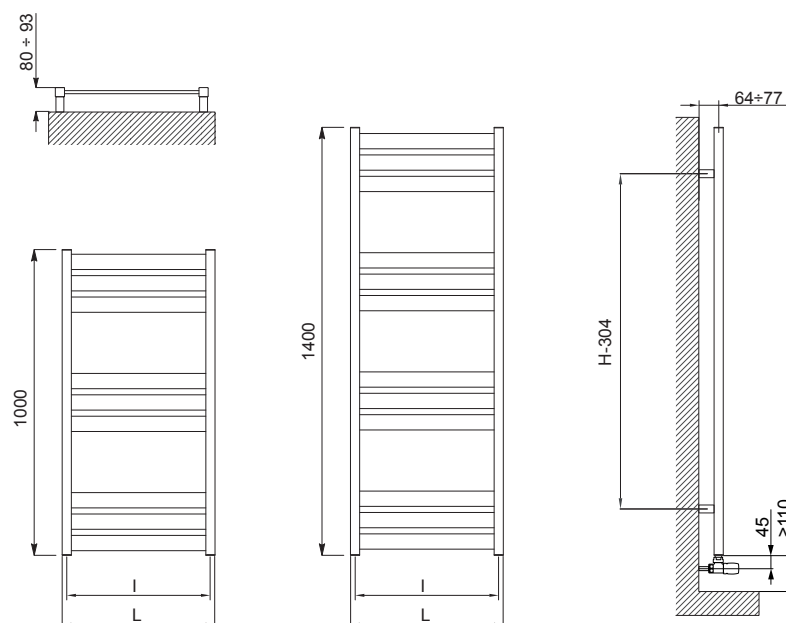
(Kit 2 pieces)
Art. nr. 5035270710016



Thermostatic head quotes

If ordered separately from the radiator, the accessories are available in standard white only.

Accessories and spare parts - see Accessories chapter



Quotes for Kristal valves

KORA

| Height [mm] | WIDTH L [mm] | Pipe Centres I [mm] | Art. nr. | Dry Weight [Kg] | Surface [m2] | Water content [lt] | Thermal output [Watt] | | Exp. n | Dual energy kit [Watt] |
|----------------|-----------------|------------------------|---------------|--------------------|-----------------|-----------------------|-------------------------------|-------------------------------|-----------|------------------------------|
| | | | | | | | $\Delta t=50^{\circ}\text{C}$ | $\Delta t=30^{\circ}\text{C}$ | | |
| 1000 | 500 | 470 | 3551626100051 | 7,7 | 0,65 | 7,7 | 384 | 207 | 1,2091 | 400 |
| 1400 | 500 | 470 | 3551626100052 | 10,4 | 0,88 | 10,4 | 520 | 281 | 1,2047 | 600 |

Art. nr. are referred to colour WHITE R01 - RAL 9010 version.

For output at different Δt than 50°C , please refer to the following formula: $\text{desired output} = \text{output at } \Delta t 50^{\circ}\text{C} \times (\text{desired } \Delta t/50)^n$

ARDESIA®

TOWEL RAILS

ELECTRIC RADIATORS
AND FAN HEATER

INOX RANGE

LIVING
DESIGN RADIATORS

VENTILATED
RADIATORS

MODELS FOR
REPLACEMENT

MY WAY®
SYSTEM

ACCESSORIES
AND TECHNICAL
SUPPORT