



SAMIRA

NEW

MATERIAL:

- Vertical collectors in painted mild steel \varnothing 30 mm.
- Horizontal heating elements in painted mild steel elliptical 50 x 25 mm.

FIXING KIT:

Brackets, airvent, hexagonal tool, plugs and screws for mounting suitable for use on compact or hollow brick, user notice.

The kit is certified from TÜV in compliance with VDI 6036-class 4.

PACKAGING:

Carton angular and profiles protected by a recyclable film in polyethylene. User notice included.

PAINTING PROCESS:

Painted with ecological epoxy powders. (Certificate DIN 55900-1,-2)

COLOURS:

Radiator and accessories: standard white colour RAL 9010-R01.
For other colours see Colour chart chapter.

ACCESSORIES:

See Accessories chapter

Functioning:	<input checked="" type="checkbox"/> Hot water	<input type="checkbox"/> Dual energy
--------------	---	--------------------------------------

P. Max: 5 bar	Functioning: hot water	T. Max: 110° C	Connections: 2 x 1/2" gas - 1 x 1/2" gas for airvent
---------------	------------------------	----------------	--

CERTIFICATIONS



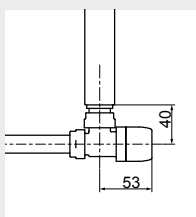
ACCESSORIES

Kristal valve square With thermostatic option White R01 - ral 9010



Copper conn. \varnothing 12/14/15
Art. nr. 5991990311161

Multilayer conn. \varnothing 16
Art. nr. 5991990311160



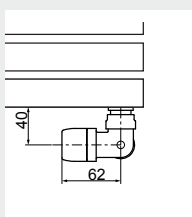
Quotes for square Kristal valves
with thermostatic option



Kristal valve corner with thermostatic option White R01 - ral 9010

Copper conn. \varnothing 12/14/15
Art. nr. 5991990311176

Multilayer conn. \varnothing 16
Art. nr. 5991990311175

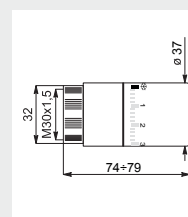


Quotes for corner Kristal valves with
thermostatic option



White thermostatic head

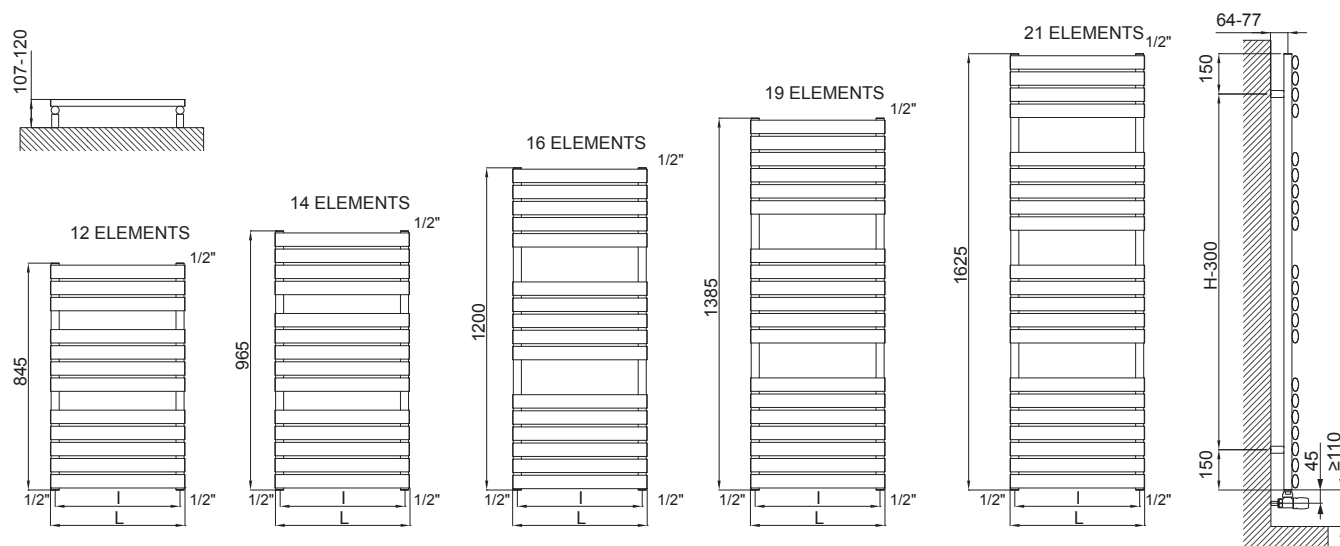
(Kit 2 pieces)
Art. nr. 5035270710016



Thermostatic head quotes

If ordered separately from the radiator, the accessories are available in standard white only.

Accessories and spare parts - see Accessories chapter



Quotes for Kristal valves

SAMIRA

Height [mm]	WIDTH L [mm]	Pipe Centres I [mm]	Art. nr.	Dry Weight [Kg]	Surface [m ²]	Water content [lt]	Thermal output [Watt]		Exp. n	Dual energy kit [Watt]
							Δt=50°C	Δt=30°C		
845	400	365	3551626102031	7,62	0,740	5,64	371	200	1,2079	400
	500	465	3551626102032	8,95	0,880	6,82	456	248	1,1938	500
	600	565	3551626102033	10,28	1,030	8,00	541	296	1,1798	600
965	400	365	3551626102034	8,83	0,860	6,56	414	223	1,2070	500
	500	465	3551626102035	10,38	1,030	7,93	507	275	1,1944	600
	600	565	3551626102036	11,93	1,190	9,31	600	328	1,1818	700
1200	400	365	3551626102037	10,29	1,000	7,61	501	271	1,2051	600
	500	465	3551626102038	12,06	1,190	9,18	609	331	1,1954	700
	600	565	3551626102039	13,83	1,380	10,75	718	392	1,1856	900
1385	400	365	3551626102040	11,95	1,170	8,99	571	308	1,2081	700
	500	465	3551626102041	14,22	1,410	10,85	693	378	1,1889	700
	600	565	3551626102042	16,09	1,610	12,72	815	444	1,1897	900
1625	400	365	3551626102043	13,40	1,310	10,04	667	359	1,2119	700
	500	465	3551626102044	15,69	1,550	12,10	808	437	1,2034	900
	600	565	3551626102045	17,98	1,790	14,17	949	536	1,1195	900

Art. nr. are referred to colour WHITE R01 - RAL 9010 version.

For output at different Δt than 50°C, please refer to the following formula: $\text{desired output} = \text{output at } \Delta t \text{ } 50^{\circ}\text{C} \times (\text{desired } \Delta t / 50)^n$