



KATIA VX PLUS

NEW

MATERIAL:

- Vertical collectors in painted mild steel \varnothing 30 mm.
- Double horizontal heating elements in painted mild steel 15x20 mm.

FIXING KIT:

Brackets, airvent, hexagonal tool, plugs and screws for mounting suitable for use on compact or hollow brick, user notice.
The kit is certified from TÜV in compliance with VDI 6036-class 4.

PACKAGING:

Carton angular and profiles protected by a recyclable film in polyethylene. User notice included.

PAINTING PROCESS:

Painted with ecological epoxy powders. (Certificate DIN 55900-1,-2)

COLOURS:

Radiator and accessories: standard white colour RAL 9010-R01.
For other colours see Colour chart chapter.

ACCESSORIES:

See Accessories chapter

Functioning:	<input checked="" type="checkbox"/> Hot water	<input type="checkbox"/> Dual energy
--------------	---	--------------------------------------

P. Max: 8 bar	Functioning: hot water	T. Max: 110° C	Connections: 2 x 1/2" gas - 1 x 1/2" gas for airvent
---------------	------------------------	----------------	--

CERTIFICATIONS



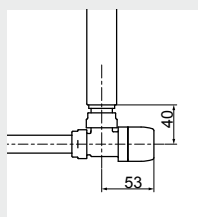
ACCESSORIES

Kristal valve square With thermostatic option White R01 - ral 9010

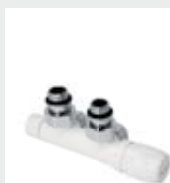


Copper conn. \varnothing 12/14/15
Art. nr. 5991990311161

Multilayer conn. \varnothing 16
Art. nr. 5991990311160



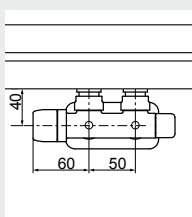
Quotes for square Kristal valves
with thermostatic option



Kristal valve square Pipe centres 50 mm right white R01 - ral 9010

Copper conn. \varnothing 12/14/15
Art. nr. 5991990311186

Multilayer conn. \varnothing 16
Art. nr. 5991990311185

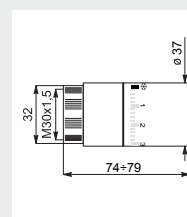


Quotes for square Kristal valves
with thermostatic option



White thermostatic head

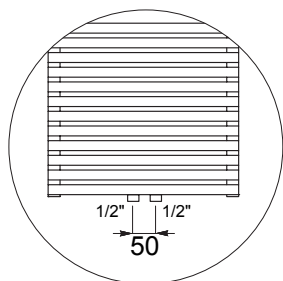
(Kit 2 pieces)
Art. nr. 5035270710016



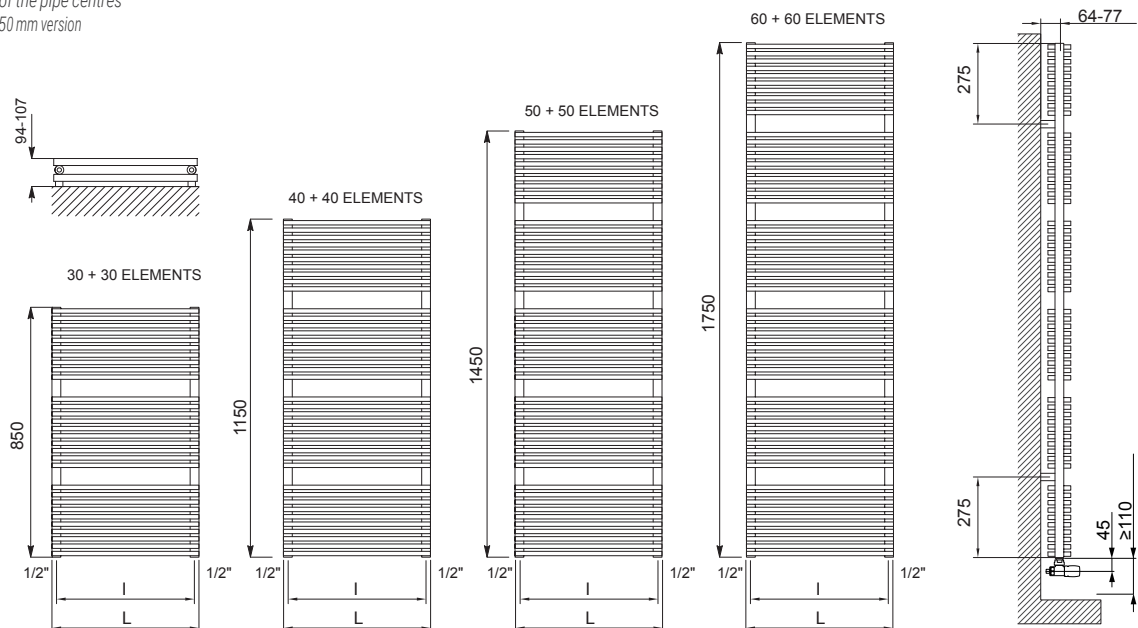
Thermostatic head quotes

If ordered separately from the radiator, the accessories are available in standard white only.

Accessories and spare parts - see Accessories chapter



Detail of the pipe centres
50 mm version



Quotes for Kristal valves

KATIA VX PLUS

KATIA VX PLUS				Pipe Centres 50 mm		Thermal output [Watt]					Dual energy kit
Height [mm]	WIDTH L [mm]	Pipe Centres l [mm]	Art. nr.	Art. nr.	Dry Weight [Kg]	Surface [m2]	Water content [lt]	Δt=50°C	Δt=30°C	Exp. n	[Watt]
850	400	370	3551826100101	3551826100115	16,40	1,70	6,20	608	322	1,2419	700
	500	470	3551826100105	3551826100119	19,90	2,10	7,50	782	416	1,2353	900
1150	400	370	3551826100102	3551826100116	21,90	2,20	8,30	772	408	1,2497	900
	500	470	3551826100106	3551826100120	26,60	2,70	10,10	995	528	1,2405	1200
	600	570	3551826100109	3551826100123	31,30	3,20	11,80	1219	650	1,2312	1200
	800	770	3551826100112	3551826100126	40,60	4,20	15,40	1667	897	1,2128	1200
1450	400	370	3551826100103	3551826100117	27,40	2,80	10,40	937	493	1,2575	1200
	500	470	3551826100107	3551826100121	33,20	3,40	12,60	1200	635	1,2457	1200
	600	570	3551826100110	3551826100124	39,10	4,00	14,80	1463	779	1,2339	1200
	800	770	3551826100113	3551826100127	50,00	5,30	19,20	1988	1071	1,2102	1200
1750	400	370	3551826100104	3551826100118	32,90	3,40	12,50	1106	580	1,2646	1200
	500	470	3551826100108	3551826100122	39,90	4,10	15,20	1398	739	1,2489	1200
	600	570	3551826100111	3551826100125	46,90	4,80	17,80	1690	900	1,2331	1200
	800	770	3551826100114	3551826100128	60,90	6,30	23,10	2274	1231	1,2017	1200

Art. nr. are referred to colour WHITE R01 - RAL 9010 version.

For output at different Δt than 50°C, please refer to the following formula: desired output = output at Δt 50°C x (desired Δt/50)ⁿ

ARDESIA®

TOWEL RAILS

ELECTRIC RADIATORS
AND FAN HEATER

INOX RANGE

LIVING
DESIGN RADIATORS

VENTILATED
RADIATORS

MODELS FOR
REPLACEMENT

MY WAY®
SYSTEM

ACCESSORIES
AND TECHNICAL
SUPPORT