



GLORIA 22 PLUS

**EUROPEAN
WARRANTY**

MATERIAL:

- Vertical collectors in painted mild steel \varnothing 30 mm.
- Double horizontal heating elements in painted mild steel \varnothing 22 mm.

FIXING KIT:

Brackets, airvent, hexagonal tool, plugs and screws for mounting suitable for use on compact or hollow brick, user notice.

The kit is certified from TÜV in compliance with VDI 6036 - class 4.

PACKAGING:

Carton angular and profiles protected by a recyclable film in polyethylene. User notice included.

PAINTING PROCESS:

Painted with ecological epoxy powders (Certificate DIN 55900-1,-2).

COLOURS:

See colour chart.

ACCESSORIES:

For the complete list, please refer to the accessories chapter.

AVAILABLE FUNCTIONS:

- Hot water
- Dual energy

P. max: 8 bar

Functioning: hot water

T. max: 110° C

Connections: n° 2 x 1/2" G - 1 x 1/2" G

CERTIFICATES



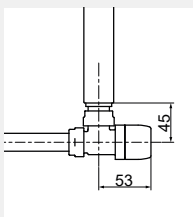
ACCESSORIES



**Kristal valve square
with thermostatic option
white R01**

Copper conn. \varnothing 12/14/15
Art. nr. 5991990311161

Multilayer conn. \varnothing 16
Art. nr. 5991990311160



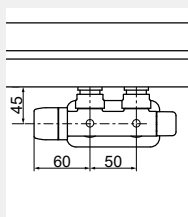
Quotes for square Kristal valves with thermostatic option



**Kristal valve square
pipe centres 50 mm left
white R01**

Copper conn. \varnothing 12/14/15
Art. nr. 5991990311188

Multilayer conn. \varnothing 16
Art. nr. 5991990311187



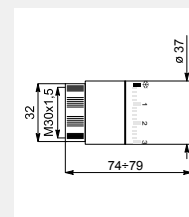
Quotes for square Kristal valves with thermostatic option



**Thermostatic head
white**

(Kit 2 pieces)

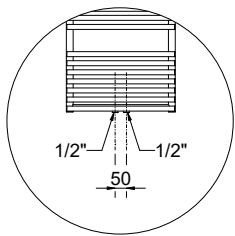
Art. nr. 5035270710016



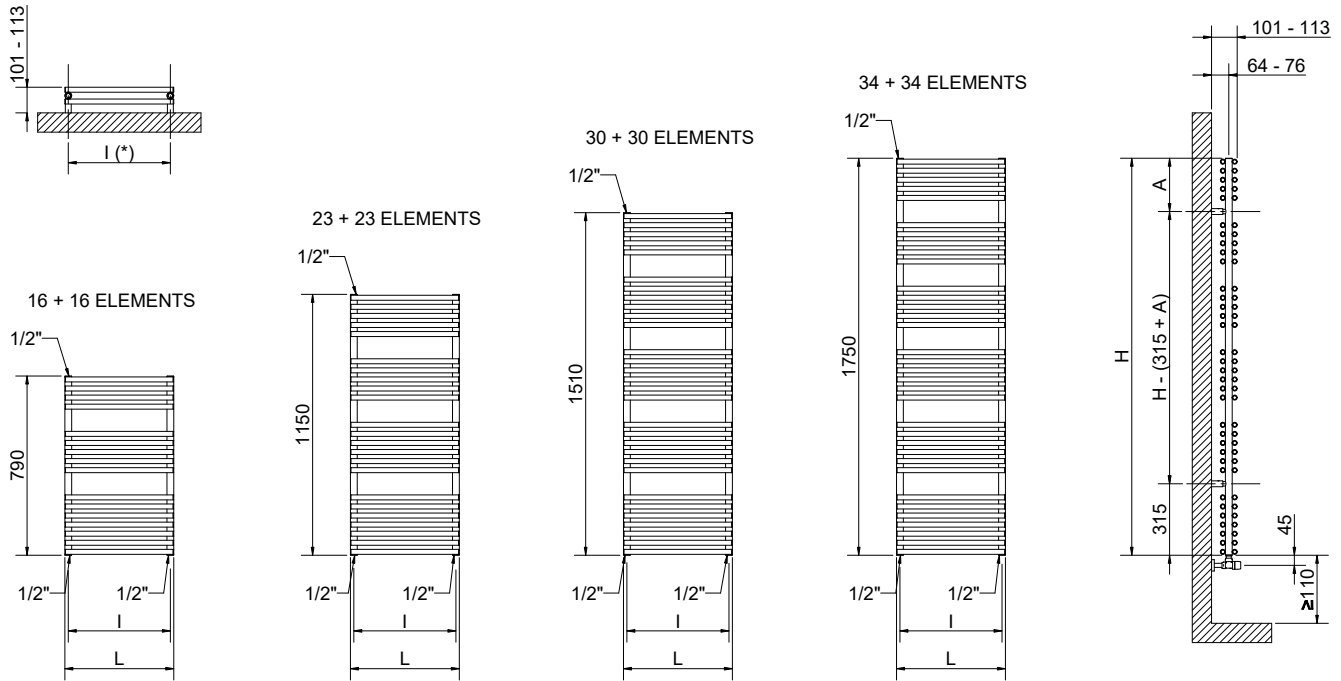
Thermostatic head quotes

If ordered separately from the radiator, the accessories are available in standard white only

Art. nr. are referred to colour WHITE R01



Detail of the pipe centres 50 mm version



(*) The fixing kit has the same pipe centre (l) as the radiator

Quotes for Kristal valves

GLORIA 22 PLUS

Height [mm]	Width L [mm]	Pipe centres l [mm]	A [mm]	Art. nr.	Pipe centres 50 mm		Thermal output [Watt]				Dual energy kit [Watt]	
					Art. nr.	Dry Weight [Kg]	Surface [m ²]	Water content [lt]	Δt=50°C	Δt=30°C		Exp. n
790	430	400	195	3551666100201	3551666100221	8,48	1,10	5,26	546	294	1,2095	500
	480	450		3551666100202	3551666100222	9,30	1,21	5,77	642	345	1,2149	600
	430	400		3551666100203	3551666100223	12,21	1,58	7,59	748	403	1,2090	700
	480	450		3551666100204	3551666100224	13,40	1,74	8,31	822	444	1,2082	700
1150	530	500	235	3551666100205	3551666100225	14,59	1,90	9,03	926	499	1,2096	900
	580	550		3551666100206	3551666100226	15,79	2,06	9,75	1002	540	1,2093	1000
	630	600		3551666100207	3551666100227	16,98	2,22	10,48	1079	588	1,1888	1000
1500	430	400	235	3551666100208	3551666100228	15,94	2,07	9,91	935	501	1,2221	900
	480	450		3551666100209	3551666100229	17,50	2,27	10,85	1025	550	1,2168	1000
	530	500		3551666100210	3551666100230	19,05	2,48	11,79	1154	617	1,2274	1000
	580	550		3551666100211	3551666100231	20,61	2,69	12,74	1247	672	1,2095	1200
	630	600		3551666100212	3551666100232	22,16	2,90	13,68	1340	721	1,2125	1200
	480	450		3551666100213	3551666100233	19,90	2,59	12,34	1137	606	1,2316	1000
1750	530	500	235	3551666100214	3551666100234	21,66	2,82	13,41	1235	655	1,2420	1200
	580	550		3551666100215	3551666100235	23,42	3,06	14,48	1385	741	1,2240	1200
	630	600		3551666100216	3551666100236	25,19	3,29	15,55	1540	826	1,2204	1200
	730	700		3551666100217	3551666100237	28,71	3,76	17,69	1752	937	1,2252	1200

Art. nr. are referred to colour WHITE R01

For output at different ΔT, please refer to the following formula: desired output = output at ΔT 50 x (desired Δt/50)ⁿ