



LUCY 25 PLUS

NEW

MATERIAL:

- Vertical collectors in painted mild steel \varnothing 30 mm.
- Double horizontal heating elements in painted mild steel \varnothing 25 mm.

FIXING KIT:

Brackets, airvent, hexagonal tool, plugs and screws for mounting suitable for use on compact or hollow brick, user notice.
The kit is certified from TÜV in compliance with VDI 6036-class 4.

PACKAGING:

Carton angular and profiles protected by a recyclable film in polyethylene. User notice included.

PAINTING PROCESS:

Painted with ecological epoxy powders. (Certificate DIN 55900-1,-2)

COLOURS:

Radiator and accessories: standard white colour RAL 9010-R01.
For other colours see Colour chart chapter.

ACCESSORIES:

See Accessories chapter

Functioning:	<input checked="" type="checkbox"/> Hot water	<input type="checkbox"/> Dual energy
--------------	---	--------------------------------------

P. Max: 8 bar	Functioning: hot water	T. Max: 110° C	Connections: 2 x 1/2" gas - 1 x 1/2" gas for airvent
---------------	------------------------	----------------	--

CERTIFICATIONS

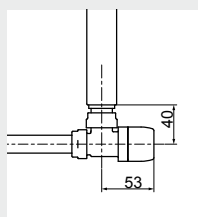


ACCESSORIES

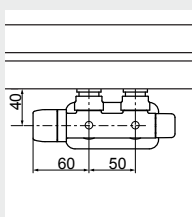
Kristal valve square With thermostatic option White R01 - ral 9010



Copper conn. \varnothing 12/14/15
Art. nr. 5991990311161
Multilayer conn. \varnothing 16
Art. nr. 5991990311160



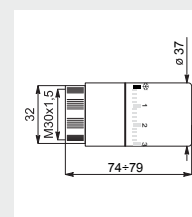
Quotes for square Kristal valves
with thermostatic option



Quotes for square Kristal valves
with thermostatic option

Kristal valve square Pipe centres 50 mm right white R01 - ral 9010

Copper conn. \varnothing 12/14/15
Art. nr. 5991990311186
Multilayer conn. \varnothing 16
Art. nr. 5991990311185



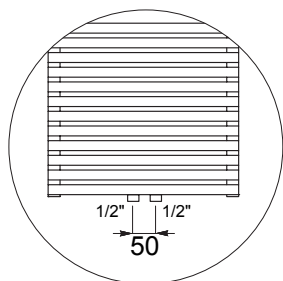
Thermostatic head quotes

White thermostatic head

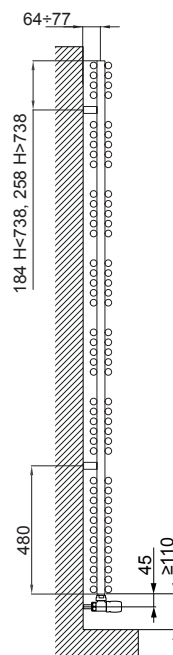
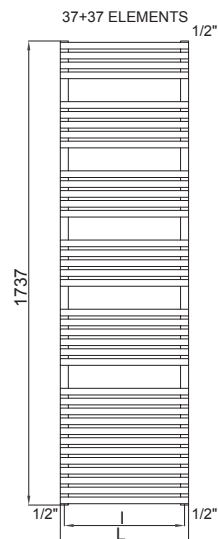
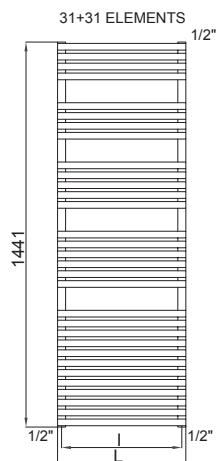
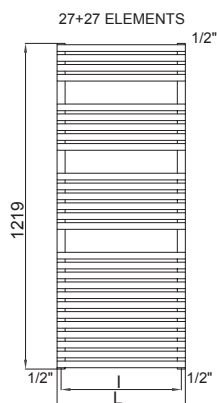
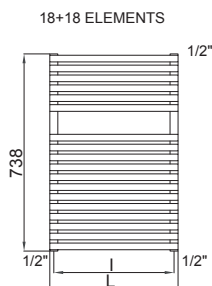
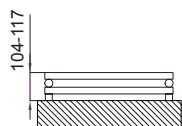
(Kit 2 pieces)
Art. nr. 5035270710016

If ordered separately from the radiator, the accessories are available in standard white only.

Accessories and spare parts - see Accessories chapter



Detail of the pipe centres
50 mm version



Quotes for Kristal valves

LUCY 25 PLUS

LUCY 25 PLUS				Pipe Centres 50 mm		Thermal output [Watt]					Dual energy kit
Height [mm]	WIDTH L [mm]	Pipe Centres I [mm]	Art. nr.	Art. nr.	Dry Weight [Kg]	Surface [m2]	Water content [lt]	Δt=50°C	Δt=30°C	Exp. n	[Watt]
738	430	400	3551406101400	3551406101414	11,07	1,44	7,76	543	294	1,1980	600
	480	450	3551406101404	3551406101418	11,50	1,50	8,06	611	331	1,1982	700
1219	430	400	3551406101401	3551406101415	15,84	2,05	11,11	816	434	1,2379	900
	480	450	3551406101405	3551406101419	17,43	2,27	12,23	915	487	1,2339	1200
	530	500	3551406101408	3551406101422	19,03	2,48	13,35	1014	541	1,2300	1200
	580	550	3551406101411	3551406101425	20,63	2,69	14,47	1112	595	1,2260	1200
1441	430	400	3551406101402	3551406101416	18,25	2,37	12,80	945	496	1,2618	1200
	480	450	3551406101406	3551406101420	20,09	2,61	14,09	1057	557	1,2536	1200
	530	500	3551406101409	3551406101423	21,92	2,85	15,38	1169	619	1,2455	1200
	580	550	3551406101412	3551406101426	23,76	3,10	16,66	1282	681	1,2374	1200
1737	430	400	3551406101403	3551406101417	21,81	2,83	15,30	1123	590	1,2599	1200
	480	450	3551406101407	3551406101421	24,01	3,12	16,84	1252	661	1,2521	1200
	530	500	3551406101410	3551406101424	26,20	3,41	18,37	1382	732	1,2442	1200
	580	550	3551406101413	3551406101427	28,39	3,70	19,91	1512	804	1,2364	1200

Art. nr. are referred to colour WHITE R01 - RAL 9010 version.

For output at different Δt than 50°C , please refer to the following formula: $\text{desired output} = \text{output at } \Delta t 50^{\circ}\text{C} \times (\text{desired } \Delta t/50)^{1,4}$

ARDESIA®

TOWEL RAILS

ELECTRIC RADIATORS
AND FAN HEATER

INOX RANGE

LIVING
DESIGN RADIATORS

VENTILATED
RADIATORS

MODELS FOR
REPLACEMENT

MY WAY®
SYSTEM

ACCESSORIES
AND TECHNICAL
SUPPORT