



LUCY 25

NEW

MATERIAL:

- Vertical collectors in painted mild steel semi oval \varnothing 30 mm.
- Horizontal heating elements in painted mild steel \varnothing 25 mm.

FIXING KIT:

Brackets, airvent, hexagonal tool, plugs and screws for mounting suitable for use on compact or hollow brick, user notice.

The kit is certified from TÜV in compliance with VDI 6036-class 4.

PACKAGING:

Carton angular and profiles protected by a recyclable film in polyethylene. User notice included.

PAINTING PROCESS:

Painted with ecological epoxy powders. (Certificate DIN 55900-1,-2)

COLOURS:

Radiator and accessories: standard white colour RAL 9010-R01.
For other colours see Colour chart chapter.

ACCESSORIES:

See Accessories chapter

Functioning:	<input checked="" type="checkbox"/> Hot water	<input type="checkbox"/> Dual energy
--------------	---	--------------------------------------

P. Max: 8 bar	Functioning: hot water	T. Max: 110° C	Connections: 2 x 1/2" gas - 1 x 1/2" gas for airvent
---------------	------------------------	----------------	--

CERTIFICATIONS



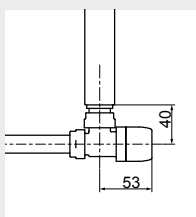
ACCESSORIES

Kristal valve square With thermostatic option White R01 - ral 9010

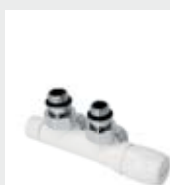


Copper conn. \varnothing 12/14/15
Art. nr. 5991990311161

Multilayer conn. \varnothing 16
Art. nr. 5991990311160



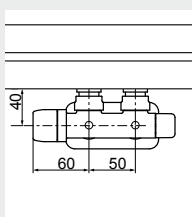
Quotes for square Kristal valves
with thermostatic option



Kristal valve square Pipe centres 50 mm right white R01 - ral 9010

Copper conn. \varnothing 12/14/15
Art. nr. 5991990311186

Multilayer conn. \varnothing 16
Art. nr. 5991990311185

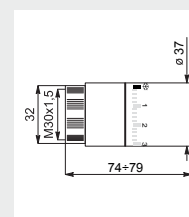


Quotes for square Kristal valves
with thermostatic option



White thermostatic head

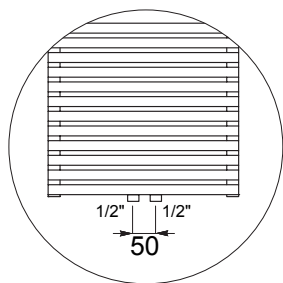
(Kit 2 pieces)
Art. nr. 5035270710016



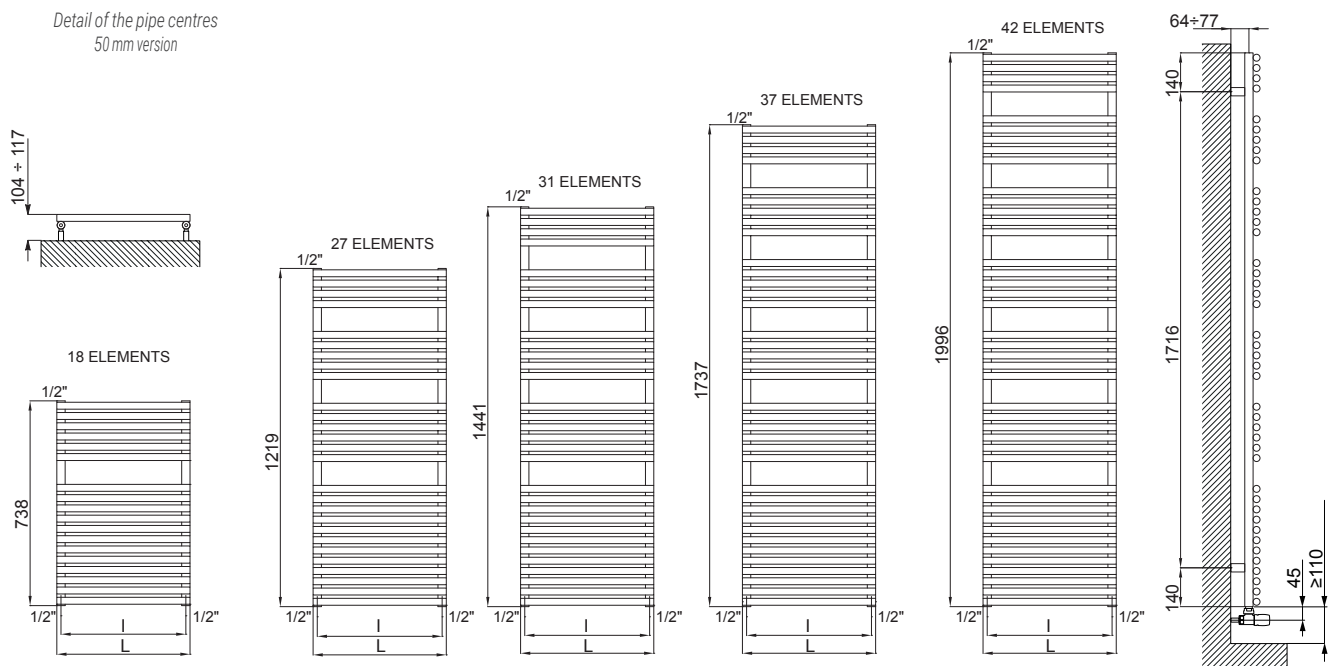
Thermostatic head quotes

If ordered separately from the radiator, the accessories are available in standard white only.

Accessories and spare parts - see Accessories chapter



Detail of the pipe centres
50 mm version



Quotes for Kristal valves

LUCY 25

LUCY 25				Pipe Centres 50 mm		Thermal output [Watt]					Dual energy kit
Height [mm]	WIDTH L [mm]	Pipe Centres I [mm]	Art. nr.	Art. nr.	Dry Weight [Kg]	Surface [m2]	Water content [lt]	Δt=50°C	Δt=30°C	Exp. n	[Watt]
738	430	400	3551406100340	3551406100360	5,8	0,747	4,1	384	210	1,1834	500
	480	450	3551406100344	3551406100364	6,4	0,818	4,5	430	235	1,1806	500
1219	430	400	3551406100341	3551406100361	9,0	1,142	6,3	589	321	1,1879	700
	480	450	3551406100345	3551406100365	9,8	1,248	6,8	656	358	1,1873	700
	530	500	3551406100348	3551406100368	10,6	1,354	7,4	724	395	1,1867	900
	580	550	3551406100352	3551406100372	11,4	1,460	8,0	791	432	1,1861	900
1441	430	400	3551406100342	3551406100362	10,4	1,319	7,3	684	371	1,1993	700
	480	450	3551406100346	3551406100366	11,3	1,440	7,9	761	413	1,1942	900
	530	500	3551406100349	3551406100369	12,2	1,562	8,6	838	457	1,1891	900
	580	550	3551406100353	3551406100373	13,1	1,684	9,2	915	500	1,1840	900
1737	430	400	3551406100343	3551406100363	12,4	1,577	8,7	813	438	1,2123	900
	480	450	3551406100347	3551406100367	13,5	1,722	9,5	903	488	1,2060	900
	530	500	3551406100350	3551406100370	14,6	1,868	10,2	992	537	1,1997	900
	580	550	3551406100354	3551406100374	15,7	2,013	11,0	1082	588	1,1934	1200
1996	530	500	3551406100351	3551406100371	16,6	2,125	11,6	1131	610	1,2091	1200
	580	550	3551406100355	3551406100375	17,8	2,289	12,5	1231	666	1,2017	1200
	730	700	3551406100356	3551406100376	21,6	2,784	15,1	1532	839	1,1798	1200

Art. nr. are referred to colour WHITE R01 - RAL 9010 version.

For output at different Δt than 50°C, please refer to the following formula: desired output = output at Δt 50°C x (desired Δt/50)ⁿ

ARDESIA®

TOWEL RAILS

ELECTRIC RADIATORS
AND FAN HEATER

INOX RANGE

LIVING
DESIGN RADIATORS

VENTILATED
RADIATORS

MODELS FOR
REPLACEMENT

MY WAY®
SYSTEM

ACCESSORIES
AND TECHNICAL
SUPPORT