



CLAUDIA[®] SQUARE

NEW

MATERIAL:

- Frame collector in painted mild steel 40x40 mm.
- Horizontal heating elements in painted mild steel ø 25 mm.

FIXING KIT:

Brackets, airvent, hexagonal tool, plugs and screws for mounting suitable for use on compact or hollow brick, user notice.

The kit is certified from TÜV in compliance with VDI 6036-class 4.

PACKAGING:

The radiator is protected by recyclable carton box. User notice included.

PAINTING PROCESS:

Painted with ecological epoxy powders. (Certificate DIN 55900-1,-2)

COLOURS:

Radiator and accessories: standard white colour RAL 9010-R01.
For other colours see Colour chart chapter.

ACCESSORIES:

See Accessories chapter

Functioning:	<input checked="" type="checkbox"/> Hot water		<input checked="" type="checkbox"/> Dual energy
--------------	---	--	---

P. Max: 8 bar	Functioning: hot water	T. Max: 110° C	Connections: 2 x 1/2" gas - 1 x 1/2" gas for airvent
---------------	------------------------	----------------	--

CERTIFICATIONS



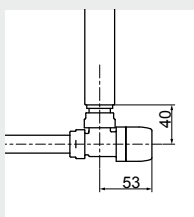
ACCESSORIES



**Kristal valve square
With thermostatic option
White R01 - ral 9010**

Copper conn. Ø 12/14/15
Art. nr. 5991990311161

Multilayer conn. Ø 16
Art. nr. 5991990311160



Quotes for square Kristal valves
with thermostatic option



**Towel bar painted mild
steel-white R01**

WIDTH 377 mm

Art. nr.	Available on width
5991990310047	≥ 400 mm
5991990310029	≥ 500 mm
5991990310034	≥ 600 mm
5991990310030	≥ 750 mm

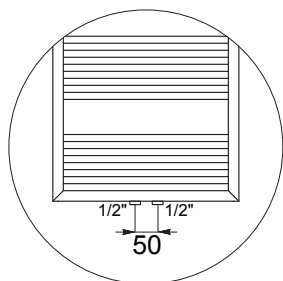


**Kit 2 Hooks
- White R01**

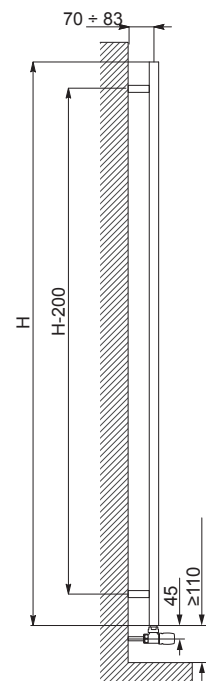
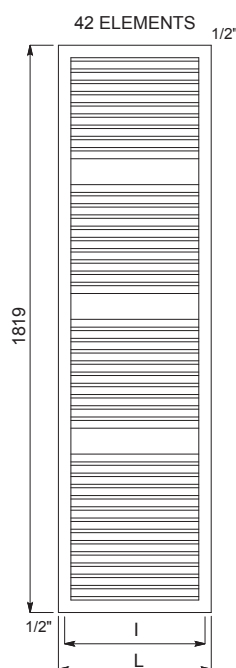
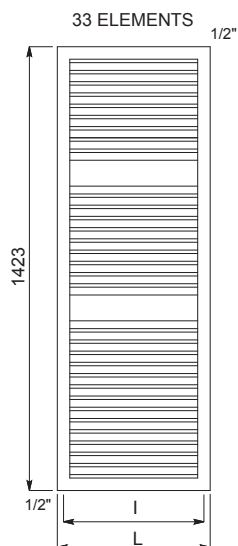
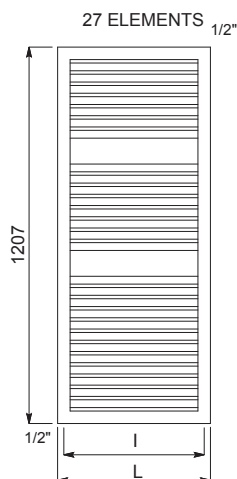
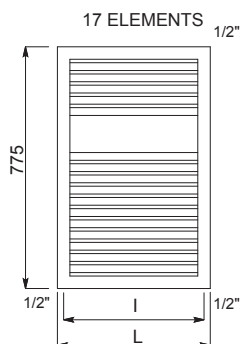
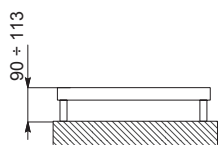
Art. nr. 5991990310028

If ordered separately from the radiator, the accessories are available in standard white only.

Accessories and spare parts - see Accessories chapter



Detail of the pipe centres
50 mm version



Quotes for Kristal valves

CLAUDIA® SQUARE

CLAUDIA® SQUARE				Pipe Centres 50 mm		Thermal output [Watt]					Dual energy kit	
Height [mm]	WIDTH L [mm]	Pipe Centres I [mm]	Art. nr.	Art. nr.		Dry Weight [Kg]	Surface [m2]	Water content [lt]	Δt=50°C	Δt=30°C	Exp. n	[Watt]
775	490	450	3551356100301	3551356100309		7,3	0,860	4,7	431	233	1,2076	500
	540	500	3551356100305	3551356100313		7,9	0,938	5,1	471	254	1,2051	500
1207	490	450	3551356100302	3551356100310		11,0	1,334	7,2	673	361	1,2211	700
	540	500	3551356100306	3551356100314		11,8	1,453	7,9	738	396	1,2211	700
1423	490	450	3551356100303	3551356100311		12,9	1,586	8,6	801	426	1,2349	900
	540	500	3551356100307	3551356100315		13,8	1,729	9,4	876	467	1,22965	900
1819	490	450	3551356100304	3551356100312		16,0	1,988	9,2	990	525	1,24141	1200
	540	500	3551356100308	3551356100316		17,2	2,163	10,0	1081	575	1,23646	1200

Art. nr. are referred to colour WHITE R01 - RAL 9010 version.

For output at different Δt than 50°C , please refer to the following formula: $\text{desired output} = \text{output at } \Delta t 50^{\circ}\text{C} \times (\text{desired } \Delta t/50)^n$