



CLAUDIA[®] CURVED

NEW

MATERIAL:

- Vertical collectors in painted mild steel semi oval 30x40 mm.
- Curved horizontal heating elements in painted mild steel \varnothing 25 mm.

FIXING KIT:

Brackets, airvent, hexagonal tool, plugs and screws for mounting suitable for use on compact or hollow brick, user notice.
The kit is certified from TÜV in compliance with VDI 6036-class 4.

PACKAGING:

The radiator is protected by recyclable carton box. User notice included.

PAINTING PROCESS:

Painted with ecological epoxy powders. (Certificate DIN 55900-1,-2)

COLOURS:

Radiator and accessories: standard white colour RAL 9010-R01.
For other colours see Colour chart chapter.

ACCESSORIES:

See Accessories chapter

Functioning:	<input checked="" type="checkbox"/> Hot water		<input checked="" type="checkbox"/> Dual energy
--------------	---	--	---

P. Max: 8 bar	Functioning: hot water	T. Max: 110° C	Connections: 2 x 1/2" gas - 1 x 1/2" gas for airvent
---------------	------------------------	----------------	--

CERTIFICATIONS

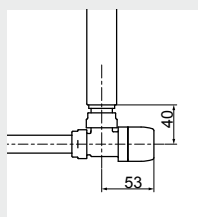


ACCESSORIES

Kristal valve square With thermostatic option White R01 - ral 9010



Copper conn. \varnothing 12/14/15
Art. nr. 5991990311161
Multilayer conn. \varnothing 16
Art. nr. 5991990311160

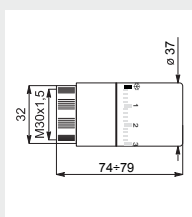


Quotes for square Kristal valves with thermostatic option



White thermostatic head

(Kit 2 pieces)
Art. nr. 5035270710016



Thermostatic head quotes

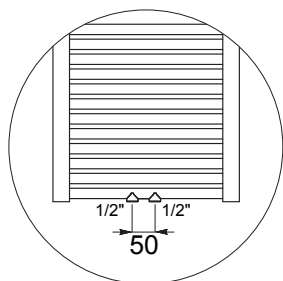


Kit 2 Hooks - White R01

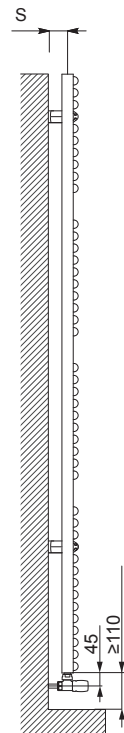
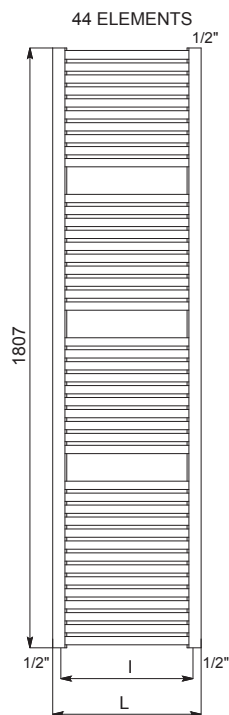
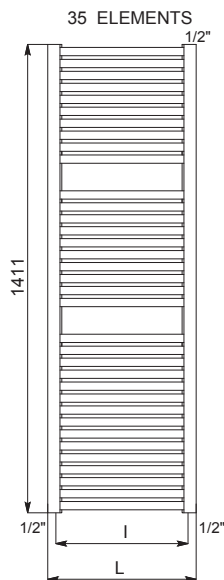
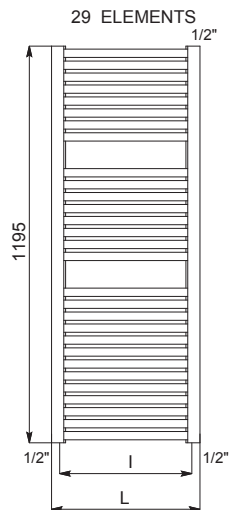
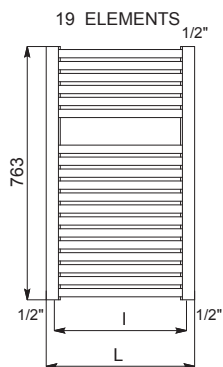
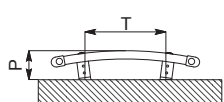
Art. nr. 5991990310028

If ordered separately from the radiator, the accessories are available in standard white only.

Accessories and spare parts - see Accessories chapter



Detail of the pipe centres
50 mm version



Quotes for Kristal valves

CLAUDIA® CURVED

	Height [mm]	Width L [mm]	Pipe Centres I [mm]	Art. nr.		Art. nr.	P [mm]	S [mm]	T [mm]	Dry Weight [Kg]	Surface [m²]	Water content [lt]	Δt=50°C	Δt=30°C	Exp. n	[Watt]
763		450	397	3551546100031		3551546101031	85	52	270	5,5	0,746	4,4	368	194	1,2501	400
		500	445	3551546100034		3551546101034	90	52	320	6,0	0,821	4,8	408	216	1,2419	500
		550	494	3551546100037		3551546101037	90	46	320	6,5	0,895	5,2	448	238	1,2353	500
		600	547	3551546100040		3551546101040	90	57	450	6,9	0,970	5,7	492	263	1,2292	600
		750	696	3551546100043		3551546101043	100	55	590	8,3	1,194	6,9	615	330	1,2170	700
1195		450	397	3551546100032		3551546101032	85	52	270	8,6	1,146	6,8	557	294	1,2476	700
		500	445	3551546100035		3551546101035	90	52	320	9,3	1,260	7,4	617	327	1,2422	700
		550	494	3551546100038		3551546101038	90	46	320	9,9	1,374	8,1	676	359	1,2379	700
		600	547	3551546100041		3551546101041	90	57	450	10,6	1,488	8,7	742	395	1,2339	900
		750	696	3551546100044		3551546101044	100	55	590	12,7	1,830	10,6	923	493	1,2258	900
1411		450	397	3551546100049		3551546101049	85	52	270	10,2	1,375	8,2	669	354	1,2461	700
		500	445	3551546100050		3551546101050	90	52	320	11,1	1,513	8,9	742	393	1,2424	900
		550	494	3551546100051		3551546101051	90	46	320	11,9	1,650	9,7	813	432	1,2394	900
		600	547	3551546100052		3551546101052	90	57	450	12,7	1,788	10,4	892	474	1,2366	900
		750	696	3551546100053		3551546101053	100	55	590	15,3	2,200	12,7	1111	592	1,2311	1200
1807		450	397	3551546100033		3551546101033	85	52	270	13,0	1,730	10,3	835	442	1,2439	900
		500	445	3551546100036		3551546101036	90	52	320	14,0	1,910	11,3	928	492	1,2427	900
		550	494	3551546100039		3551546101039	90	46	320	15,1	2,083	12,2	1019	540	1,2417	1200
		600	547	3551546100042		3551546101042	90	57	450	16,1	2,250	13,2	1121	595	1,2408	1200
		750	696	3551546100045		3551546101045	100	55	590	19,3	2,774	16,0	1402	745	1,2390	1200

Art. nr. are referred to colour WHITE R01 - RAL 9010 version.

For output at different Δt than 50°C, please refer to the following formula: desired output = output at Δt 50°C x (desired Δt/50)ⁿ