

VOLANO TERMICO PDC REVERSO

HEATING WATER STORAGE BOTH FOR HOT AND COLD WATER INSTALLATIONS



TECHNICAL DESCRIPTION

VOLANO TERMICO PDC REVERSO is used in air conditioned systems to store cold water and also in heating systems to store hot heating water at high flow rate. Thanks to the aluminium external lining it is suitable for outdoor installation.

MATERIAL

Mild steel

APPLICATION

Buffer either for hot or cold water

ANTI-CORROSION TREATMENT

The anti-corrosion treatment is not necessary being installed in closed systems.

INSULATION

A layer of insulation not subject to condensation plus a second layer of polyester fleece, all sheltered by an aluminium external lining (removable so to ease the installation)

EXTERNAL LINING

Galvanized and painted metallic cover

CONNECTION FOR ELECTRICAL IMMERSION HEATER

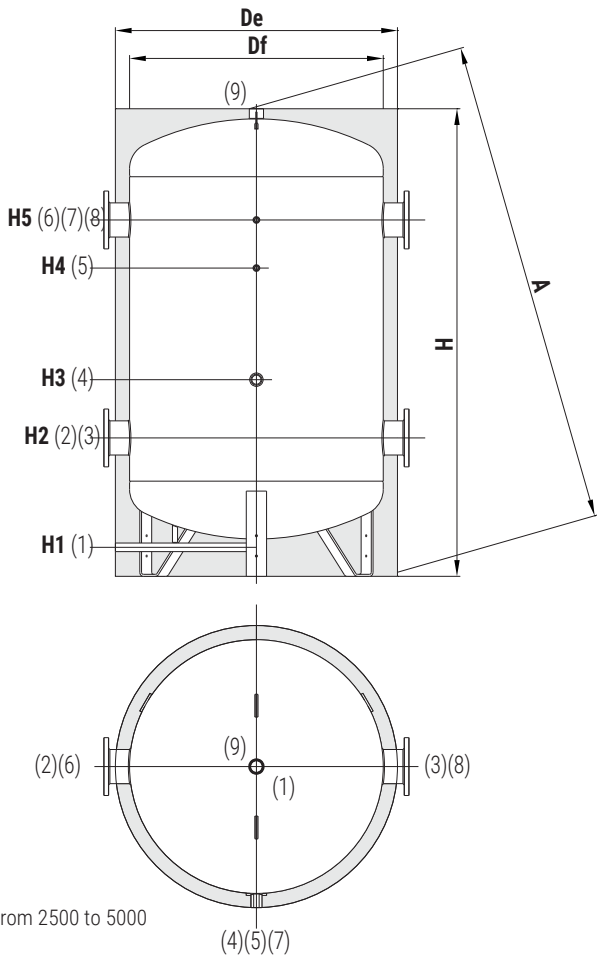
1 1/2" connection for low temperature electrical immersion heater (thermostat from 0 to +50 °C) - see the table below.

WARRANTY

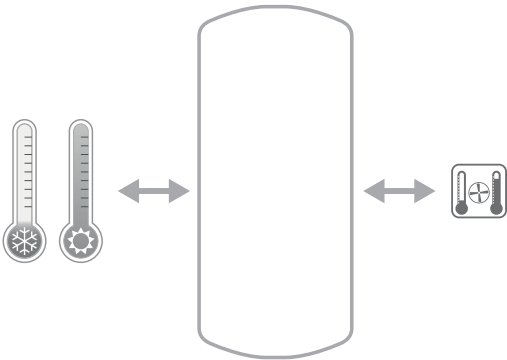
2 years

See general sales conditions and warranty.

PRESSURE	TEMPERATURE
Pmax	Tmax
4 bar	-10 / +90 °C



from 2500 to 5000



VOLANO TERMICO PDC

Model	HARD FOAM insulation
	Art. Nr.
2500	3001162310559
3000	3001162310560
4000	3001162310561

1	Drain
2	
3	
6	To the System
8	
4	Connection for electrical immersion 1 1/2" F
5	
7	Connection for instrumentation 1/2" F
9	To the System

Model	Weight [Kg]	Volume [lt]	Df	De	H	A	H1	H2	H3	H4	H5	1	2 - 3 - 6 - 8	9
mm														
2500	397	2294	1250	1390	2304	2621	143	682	969	1519	1756	1"	DN150 PN16	2"
3000	432	2988	1400	1540	2378	2760	127	711	998	1448	1785	1"	DN150 PN16	2"
4000	494	3914	1600	1740	2386	2873	105	719	996	1426	1763	1"	DN150 PN16	2"