

VASO INERZIALE INOX COMPACT

316 L STAINLESS STEEL DOMESTIC HOT WATER ACCUMULATION TANK



APPLICATION

Domestic hot water storage. Suitable for low-ceilinged room.

MATERIAL

Stainless Steel 316 L suitable for domestic hot water according to D. M. n. 174 dated 06.04.04.

INSULATION (DISMOUNTABLE)

NOFIRE® polyester fleece 100% made of recyclable material, with high thermal insulation. Fire resistance class B-s2d0 according to EN 13501.

Grey PVC external lining complete with top and flange cover

CATHODE PROTECTION

2 magnesium anodes.

DRAIN

External confluence through drain connection.

GASKET- FLANGE PLATE

Silicone gaskets suitable for alimentary use; Stainless steel exchanger head.

WARRANTY

5 years - See general sales conditions and warranty

ACCESSORIES AND SPARE PARTS

See Accessories section for the entire list.



VASO INERZIALE COMPACT XC

DISMOUNTABLE SOFT FLEECE

Model	insulation
	Art. Nr.
2500	3060052140411
3000	3060052140413
4000	3060052140415

ELECTRICAL IMMERSION HEATERS

Mod.	Volume of water heated by the electrical immersion [lt]	MONOPHASE			THREEPHASE				
		1,5 kW	2 kW	3 kW	4 kW	5 kW	6 kW	9 kW	12 kW
		5240000000051	5240000000052	5240000000053	5240000000047	5240000000048	5240000000049	5240000000050	5240000000031
		Ignition time from 10 °C to 45 °C with immersion heaters [min]							
2500	797	1428	1071	714	535	428	357	238	178
3000	874	1565	1173	782	587	469	391	261	196
4000	924	1655	1241	828	621	497	414	276	207

— Accessories on request —

"Easy Control" Electronic Display

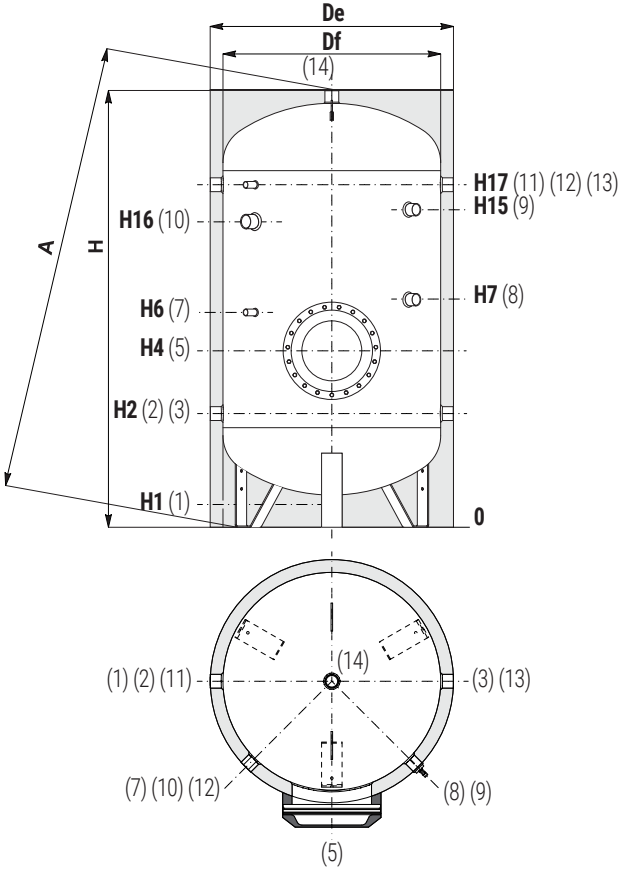
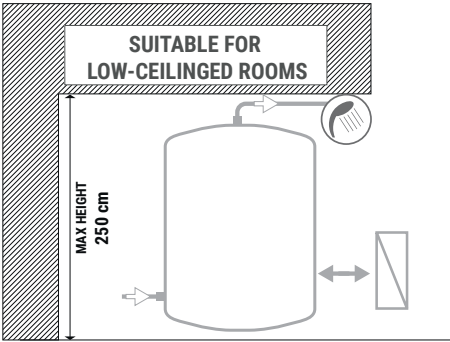
ART. NR.	FOR MODELS
5005000310002	XC



VASO INERZIALEINOX COMPACT

316 L STAINLESS STEEL DOMESTIC HOT WATER ACCUMULATION TANK

STORAGE	
Pmax	Tmax
6 bar	95 °C



- 1 Drain 1" Gas F
- 2 Domestic cold water circuit inlet / Delivery to external heat exchanger
- 3 Domestic cold water circuit inlet / To the plate heat exchanger
- 5 Blind flange for inspection
- 7 Connection for instrumentation 1/2" Gas F
- 8 Connection for magnesium anode 1"1/4 Gas F
- 9 Connection for 2nd anode 1"1/4 Gas F
- 10 Connection for electrical immersion 2" Gas F
- 11 Recirculation / from plate heat exchanger
- 12 Connection for instrumentation 1/2" Gas F
- 13 Recirculation or DHW outlet
- 14 Domestic hot water outlet



Model	Volume	Df	De	H	A	H1	H2	H4	H6	H7
	[lt]									
2500	2635	1400	1500	2122	2542	117	557	602	742	982
3000	3038	1500	1600	2131	2606	106	556	601	741	981
4000	4002	1600	1700	2409	2892	94	564	609	749	1029

Model	H15	H16	H17	5	1	2	3	11	13	7	12	8	9	10	14
	[mm]				Connections Gas F										
2500	1552	1501	1657	Øe 240	1"	2"		1/2"	1"1/4	1"1/4	2"	2"			
3000	1551	1500	1656	Øe 240	1"	2"		1/2"	1"1/4	1"1/4	2"	2"			
4000	1809	1732	1904	Øe 240	1"	2"		1/2"	1"1/4	1"1/4	2"	2"			

P.E.D. product designed and produced in conformity to the article 4.3 of directive 2014/68/UE - ErP Ecodesign directive 2009/125/CE

EXTRA-BOLLY®
CALORIFIERS

BOLLYTERM®
CALORIFIERS

STAINLESS STEEL
CALORIFIERS

CALORIFIERS FOR
HEAT PUMP

MULTIFUEL ENERGY
CYLINDERS - PUFFER

HYDRONIC

INERTIAL
TANKS

WATER PRESSURE
TANKS

COMPRESSED AIR
RECEIVERS

ACCESSORIES
AND SPARE PARTS

TECHNICAL
SUPPORT