

# GLORIA 22

## WIDE



EUROPEAN  
WARRANTY

### MATERIAL:

- Vertical collectors in painted mild steel  $\varnothing$  30 mm.
- Horizontal heating elements in painted mild steel  $\varnothing$  22 mm.

### FIXING KIT:

Brackets, airvent, hexagonal tool, plugs and screws for mounting suitable for use on compact or hollow brick, user notice.

The kit is certified from TÜV in compliance with VDI 6036-class 4.

### PACKAGING:

Carton angular and profiles protected by a recyclable film in polyethylene. User notice included.

### PAINTING PROCESS:

Painted with ecological epoxy powders. (Certificate DIN 55900-1,-2)

### COLOURS:

Radiator and accessories: standard white colour RAL 9010-R01.  
For other colours see Colour chart chapter.

### ACCESSORIES:

See Accessories chapter

Functioning:	<input checked="" type="checkbox"/> Hot water		<input checked="" type="checkbox"/> Dual energy
--------------	---	--	---

P. Max: 8 bar	Functioning: hot water	T. Max: 110° C	Connections: 2 x 1/2" gas - 1 x 1/2" gas for airvent
---------------	------------------------	----------------	--

## CERTIFICATIONS



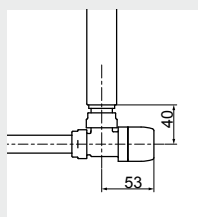
## ACCESSORIES

### Kristal valve square With thermostatic option White R01 - ral 9010



Copper conn.  $\varnothing$  12/14/15  
Art. nr. 5991990311161

Multilayer conn.  $\varnothing$  16  
Art. nr. 5991990311160

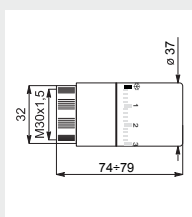


Quotes for square Kristal valves  
with thermostatic option



### White thermostatic head

(Kit 2 pieces)  
Art. nr. 5035270710016

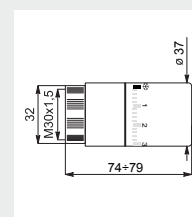


Thermostatic head quotes



### Chromed thermostatic head

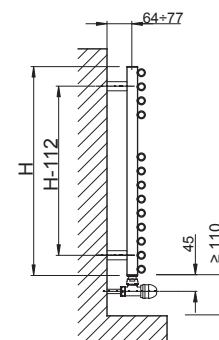
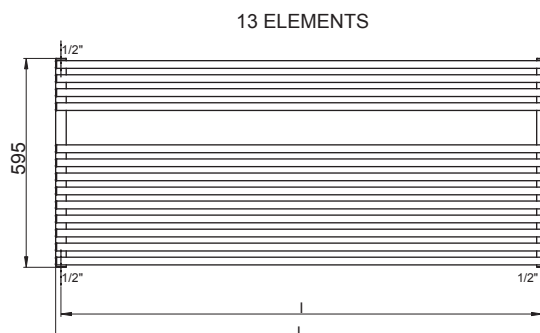
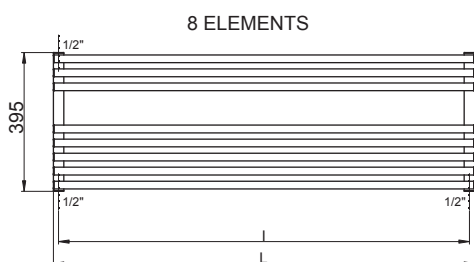
(Kit 2 pieces)  
Art. nr. 5035270710015



Thermostatic head quotes

If ordered separately from the radiator, the accessories are available in standard white only.

Accessories and spare parts - see Accessories chapter



Quotes for Kristal valves

## GLORIA 22 WIDE

Height [mm]	WIDTH L [mm]	Pipe Centres l [mm]	Art. nr.	Dry Weight [Kg]	Surface [m2]	Water content [lt]	Thermal output [Watt]		Exp. n	Dual energy kit [Watt]
							$\Delta t=50^{\circ}\text{C}$	$\Delta t=30^{\circ}\text{C}$		
<b>395</b>	1200	1170	3551666100001	6,7	0,73	3,5	488	268	1,1717	400
	1400	1370	3551666100003	7,7	0,85	3,8	565	308	1,1860	400
<b>595</b>	1200	1170	3551666100002	10,8	1,9	5,3	788	425	1,2070	700
	1400	1370	3551666100004	12,4	1,37	6,2	911	495	1,1954	700

Art. nr. are referred to colour WHITE R01 - RAL 9010 version.

For output at different  $\Delta t$  than  $50^{\circ}\text{C}$ , please refer to the following formula:  $\text{desired output} = \text{output at } \Delta t 50^{\circ}\text{C} \times (\text{desired } \Delta t/50)^{1,4}$