



LUCY 18 WIDE

MATERIAL:

- Vertical collectors in painted mild steel \varnothing 30 mm.
- Horizontal heating elements in painted mild steel \varnothing 18 mm.

FIXING KIT:

Brackets, airvent, hexagonal tool, plugs and screws for mounting suitable for use on compact or hollow brick, user notice.
The kit is certified from TÜV in compliance with VDI 6036-class 4.

PACKAGING:

Carton angular and profiles protected by a recyclable film in polyethylene. User notice included.

PAINTING PROCESS:

Painted with ecological epoxy powders. (Certificate DIN 55900-1,-2)

COLOURS:

Radiator and accessories: standard white colour RAL 9010-R01.
For other colours see Colour chart chapter.

ACCESSORIES:

See Accessories chapter

Functioning:	<input checked="" type="checkbox"/> Hot water		<input checked="" type="checkbox"/> Dual energy
--------------	---	--	---

P. Max: 8 bar	Functioning: hot water	T. Max: 110° C	Connections: 2 x 1/2" gas - 1 x 1/2" gas for airvent
---------------	------------------------	----------------	--

CERTIFICATIONS



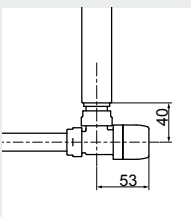
ACCESSORIES



**Kristal valve square
With thermostatic option
White R01 - ral 9010**

Copper conn. \varnothing 12/14/15
Art. nr. 5991990311161

Multilayer conn. \varnothing 16
Art. nr. 5991990311160

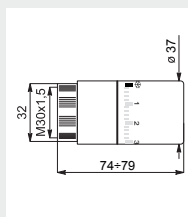


Quotes for square Kristal valves
with thermostatic option



White thermostatic head

(Kit 2 pieces)
Art. nr. 5035270710016



Thermostatic head quotes

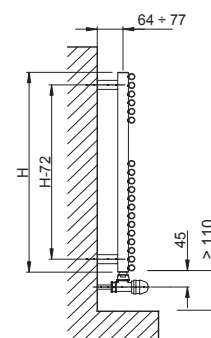
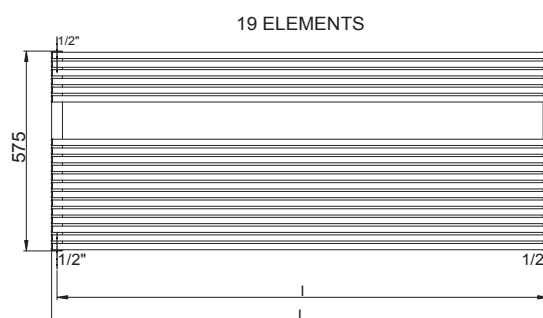
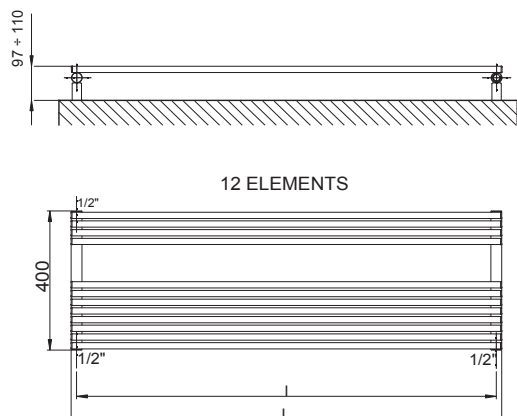


**Kit 2 Hooks
WHITE RAL 9010 - R01**

Art. nr. 5991990310388

If ordered separately from the radiator, the accessories are available in standard white only.

Accessories and spare parts - see Accessories chapter



Quotes for Kristal valves

LUCY 18 WIDE

Height [mm]	WIDTH L [mm]	Pipe Centres I [mm]	Art. nr.	Dry Weight [Kg]	Surface [m ²]	Water content [lt]	Thermal output [Watt]		Exp. n	Dual energy kit [Watt]
							$\Delta t=50^{\circ}\text{C}$	$\Delta t=30^{\circ}\text{C}$		
400	1200	1170	3551406100250	8,1	0,89	3,2	585	319	1,18905	400
	1400	1370	3551406100252	9,0	1,025	3,6	701	383	1,18223	400
575	1200	1170	3551406100251	12,6	1,4	5,0	901	493	1,1811	700
	1400	1370	3551406100253	14,2	1,6	5,7	1091	587	1,21455	700

Art. nr. are referred to colour WHITE R01 - RAL 9010 version.

For output at different Δt than 50°C , please refer to the following formula: $\text{desired output} = \text{output at } \Delta t 50^{\circ}\text{C} \times (\text{desired } \Delta t/50)^{1,4}$