



NAIKE



EUROPEAN
WARRANTY

MATERIAL:

- Frame collector in painted mild steel 30 x 30 mm.
- Horizontal heating elements in painted mild steel 15 x 20 mm.

FIXING KIT:

Brackets, airvent, hexagonal tool, plugs and screws for mounting suitable for use on compact or hollow brick, user notice.

The kit is certified from TÜV in compliance with VDI 6036-class 4.

PACKAGING:

Carton angular and profiles protected by a recyclable film in polyethylene. User notice included.

PAINTING PROCESS:

Painted with ecological epoxy powders. (Certificate DIN 55900-1,-2)

COLOURS:

Radiator and accessories: standard white colour RAL 9010-R01.
For other colours see Colour chart chapter.

ACCESSORIES:

See Accessories chapter

Functioning:	<input checked="" type="checkbox"/> Hot water		<input checked="" type="checkbox"/> Dual energy
--------------	---	--	---

P. Max: 8 bar	Functioning: hot water	T. Max: 110° C	Connections: 2 x 1/2" gas - 1 x 1/2" gas for airvent
---------------	------------------------	----------------	--

CERTIFICATIONS



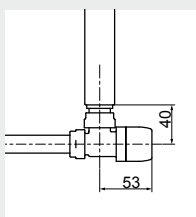
ACCESSORIES

Kristal valve square With thermostatic option White R01 - ral 9010



Copper conn. Ø 12/14/15
Art. nr. 5991990311161

Multilayer conn. Ø 16
Art. nr. 5991990311160

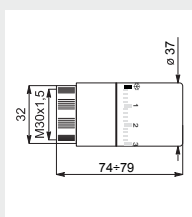


Quotes for square Kristal valves
with thermostatic option



White thermostatic head

(Kit 2 pieces)
Art. nr. 5035270710016

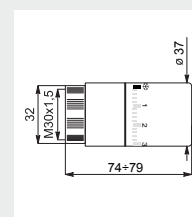


Thermostatic head quotes



Chromed thermostatic head

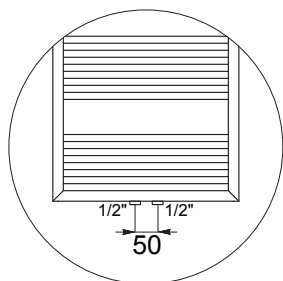
(Kit 2 pieces)
Art. nr. 5035270710015



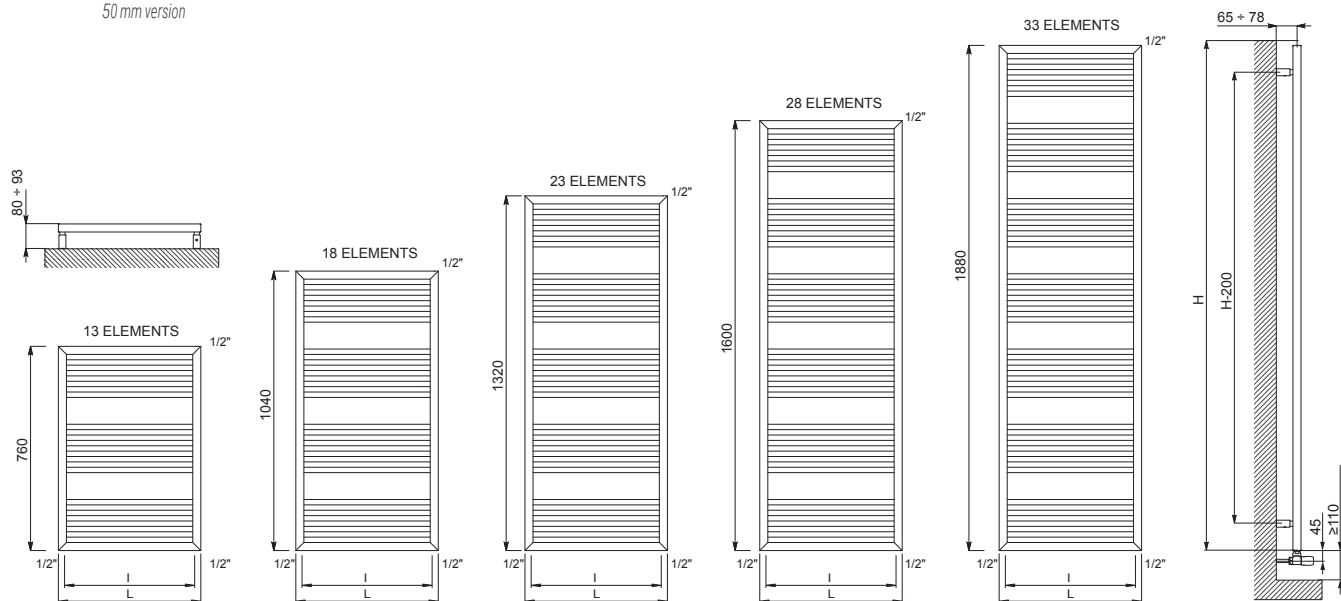
Thermostatic head quotes

If ordered separately from the radiator, the accessories are available in standard white only.

Accessories and spare parts - see Accessories chapter



Detail of the pipe centres
50 mm version



Quotes for Kristal valves

NAIKE

NAIKE				Pipe Centres 50 mm		Thermal output [Watt]					Dual energy kit
Height [mm]	WIDTH L [mm]	Pipe Centres I [mm]	Art. nr.	Art. nr.	Dry Weight [Kg]	Surface [m2]	Water content [lt]	Δt=50°C	Δt=30°C	Exp. n	[Watt]
760	480	450	3551826102021	3551826102029	7,00	0,60	2,90	350	191	1,1867	400
	530	500	3551826102025	3551826102033	7,60	0,65	3,10	381	208	1,1886	400
	580	550	3551826102005	3551826102015	8,20	0,70	3,40	412	224	1,1904	400
1040	480	450	3551826102022	3551826102030	9,20	0,80	3,80	459	246	1,2193	500
	530	500	3551826102026	3551826102034	10,00	0,85	4,00	499	268	1,2142	600
	580	550	3551826102006	3551826102016	10,80	0,92	4,30	538	290	1,2092	600
1320	480	450	3551826102002	3551826102012	11,40	0,97	4,60	568	303	1,2307	700
	530	500	3551826102004	3551826102014	12,40	1,05	4,90	617	330	1,2242	700
	580	550	3551826102008	3551826102018	13,30	1,14	5,20	667	358	1,2177	700
1600	480	450	3551826102023	3551826102031	13,70	1,16	5,50	679	364	1,2221	700
	530	500	3551826102027	3551826102035	14,80	1,26	5,80	739	397	1,2156	700
	580	550	3551826102009	3551826102019	15,90	1,36	6,20	799	431	1,2092	900
1880	480	450	3551826102024	3551826102032	15,90	1,35	6,30	793	427	1,2135	900
	530	500	3551826102028	3551826102036	17,20	1,46	6,70	864	467	1,2071	900
	580	550	3551826102010	3551826102020	18,50	1,57	7,10	936	507	1,2007	900

Art. nr. are referred to colour WHITE R01 - RAL 9010 version.

For output at different Δt than 50°C , please refer to the following formula: $\text{desired output} = \text{output at } \Delta t 50^{\circ}\text{C} \times (\text{desired } \Delta t/50)^{1.4}$