



NAUSICA



EUROPEAN
WARRANTY

MATERIAL:

- Vertical collectors in painted mild steel semi oval 30x40 mm.
- Horizontal heating elements in painted mild steel elliptical 50x25 mm.

FIXING KIT:

Brackets, airvent, hexagonal tool, plugs and screws for mounting suitable for use on compact or hollow brick, user notice.

The kit is certified from TÜV in compliance with VDI 6036-class 4.

PACKAGING:

Carton angular and profiles protected by a recyclable film in polyethylene. User notice included.

PAINTING PROCESS:

Painted with ecological epoxy powders. (Certificate DIN 55900-1,-2)

COLOURS:

Radiator and accessories: standard white colour RAL 9010-R01.

For other colours see Colour chart chapter.

ACCESSORIES:

See Accessories chapter

Functioning:	<input checked="" type="checkbox"/> Hot water	<input type="checkbox"/> Dual energy
--------------	---	--------------------------------------

P. Max: 5 bar	Functioning: hot water	T. Max: 110° C	Connections: 2 x 1/2" gas - 1 x 1/2" gas for airvent
---------------	------------------------	----------------	--

CERTIFICATIONS



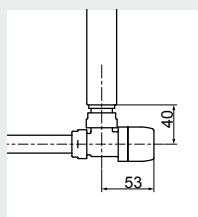
ACCESSORIES

Kristal valve square With thermostatic option White R01 - ral 9010



Copper conn. Ø 12/14/15
Art. nr. 5991990311161

Multilayer conn. Ø 16
Art. nr. 5991990311160

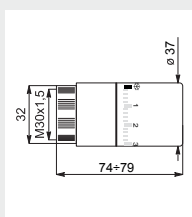


Quotes for square Kristal valves
with thermostatic option



White thermostatic head

(Kit 2 pieces)
Art. nr. 5035270710016



Thermostatic head quotes



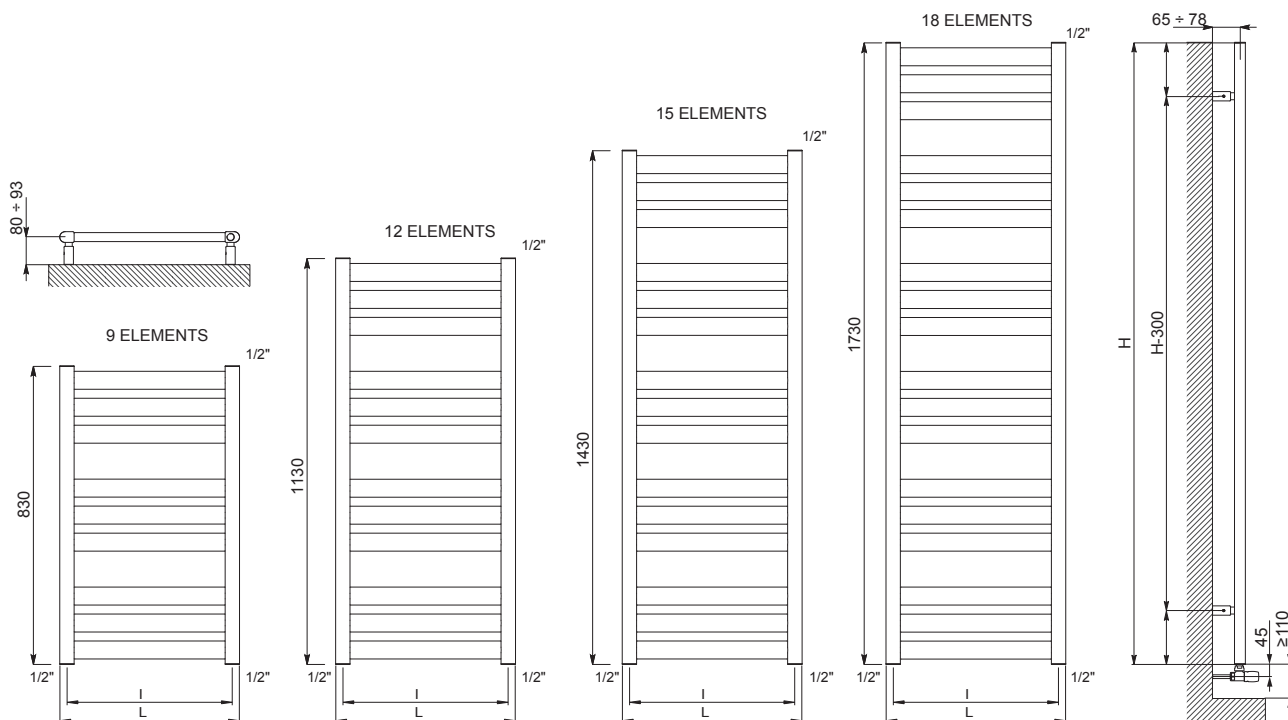
Foldable towel bar in plexiglass and stainless steel

Foldable and removable, it is
suitable for towel rails in all fini-
shing: white, coloured, chromed
or stainless steel finishing. It can
not be used on towel rails with
curved elements, Dory and Lucy
Plus models. Available with Width
≥ 450 mm

WIDTH L x Profondità P	Art. nr.
L 370 mm x P 377 mm	5991990310402
L 420 mm x P 377 mm	5991990310403

If ordered separately from the radiator, the accessories are available in standard white only.

Accessories and spare parts - see Accessories chapter



Quotes for Kristal valves

NAUSICA

Height [mm]	WIDTH L [mm]	Pipe Centres I [mm]	Art. nr.	Dry Weight [Kg]	Surface [m2]	Water content [lt]	Thermal output [Watt]		Exp. n	Dual energy kit [Watt]
							$\Delta t=50^{\circ}\text{C}$	$\Delta t=30^{\circ}\text{C}$		
830	500	450	3551626100101	6,50	0,67	4,70	359	192	1,2236	400
	550	500	3551626100107	7,00	0,72	5,10	378	202	1,2294	400
	600	550	3551626100104	7,50	0,78	5,50	416	223	1,2227	500
1130	500	450	3551626100102	8,70	0,90	6,30	479	256	1,2302	600
	550	500	3551626100108	9,40	0,97	6,90	507	270	1,2373	600
	600	550	3551626100105	10,00	1,04	7,40	556	297	1,2283	600
1430	500	450	3551626100103	10,90	1,13	8,00	601	319	1,2369	700
	550	500	3551626100109	11,80	1,22	8,60	622	329	1,2469	700
	600	550	3551626100106	12,60	1,31	9,20	699	372	1,2340	700
1730	500	450	3551626100111	13,10	1,36	9,60	725	386	1,2315	700
	550	500	3551626100110	14,10	1,47	10,30	733	384	1,2648	900
	600	550	3551626100112	15,10	1,58	11,10	846	452	1,2278	900

Art. nr. are referred to colour WHITE R01 - RAL 9010 version.

For output at different Δt than 50°C , please refer to the following formula: $\text{desired output} = \text{output at } \Delta t 50^{\circ}\text{C} \times (\text{desired } \Delta t/50)^n$