



CLAUDIA® WIDE

MATERIAL:

- Vertical collectors in painted mild steel semi oval 30x40 mm.
- Horizontal heating elements in painted mild steel ø 25 mm.

FIXING KIT:

Brackets, airvent, hexagonal tool, plugs and screws for mounting suitable for use on compact or hollow brick, user notice.

The kit is certified from TÜV in compliance with VDI 6036-class 4.

PACKAGING:

The radiator is protected by recyclable carton box. User notice included.

PAINTING PROCESS:

Painted with ecological epoxy powders. (Certificate DIN 55900-1,-2)

COLOURS:

Radiator and accessories: standard white colour RAL 9010-R01.
For other colours see Colour chart chapter.

ACCESSORIES:

See Accessories chapter

Functioning:	<input checked="" type="checkbox"/> Hot water		<input checked="" type="checkbox"/> Dual energy
--------------	---	--	---

P. Max: 8 bar	Functioning: hot water	T. Max: 110° C	Connections: 2 x 1/2" gas - 1 x 1/2" gas for airvent
---------------	------------------------	----------------	--

CERTIFICATIONS



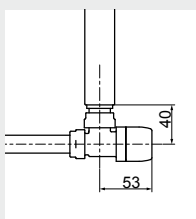
ACCESSORIES

Kristal valve square With thermostatic option White R01 - ral 9010



Copper conn. Ø 12/14/15
Art. nr. 5991990311161

Multilayer conn. Ø 16
Art. nr. 5991990311160

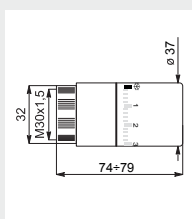


Quotes for square Kristal valves
with thermostatic option



White thermostatic head

(Kit 2 pieces)
Art. nr. 5035270710016



Thermostatic head quotes

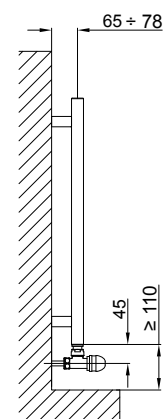
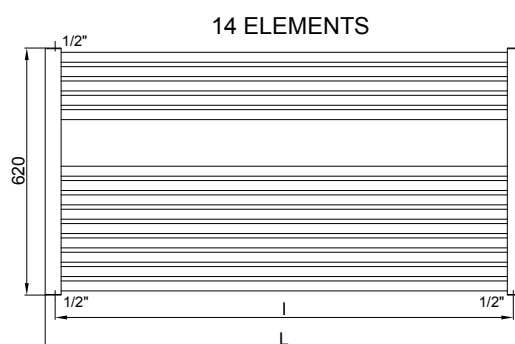
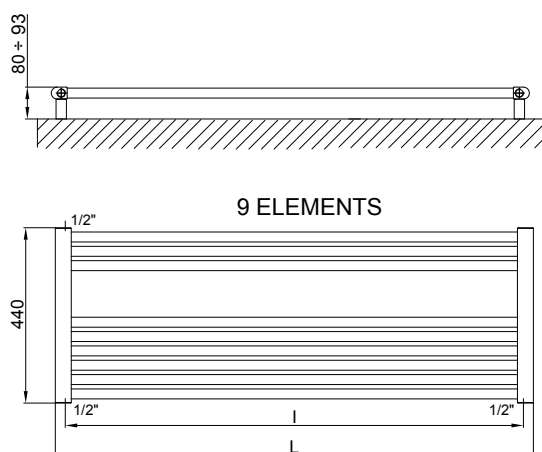


Kit 2 Hooks - White R01

Art. nr. 5991990310028

If ordered separately from the radiator, the accessories are available in standard white only.

Accessories and spare parts - see Accessories chapter



Quotes for Kristal valves

CLAUDIA® WIDE

Height [mm]	WIDTH L [mm]	Pipe Centres I [mm]	Art. nr.	Dry Weight [Kg]	Surface [m2]	Water content [lt]	Thermal output [Watt]		Exp. n	Dual energy kit [Watt]
							$\Delta t=50^{\circ}\text{C}$	$\Delta t=30^{\circ}\text{C}$		
440	1200	1150	3551356100101	6,1	0,903	5,1	471	261	1,155	400
	1400	1350	3551356100103	6,9	1,045	5,9	558	311	1,145	400
620	1200	1150	3551356100102	9,3	1,389	7,9	712	390	1,176	700
	1400	1350	3551356100104	10,6	1,609	9,1	837	457	1,183	700

Art. nr. are referred to colour WHITE R01 - RAL 9010 version.

For output at different Δt than 50°C , please refer to the following formula: $\text{desired output} = \text{output at } \Delta t 50^{\circ}\text{C} \times (\text{desired } \Delta t/50)^{1,4}$