

EXTRA1 INOX VAPORE

316 L STAINLESS STEEL CALORIFIERS WITH 1 EXTRACTABLE HEAT EXCHANGER

FOR STEAM GENERATOR



APPLICATION

Production and storage of sanitary hot water. Suitable for steam generators.

MATERIAL

Stainless Steel 316 L suitable for domestic hot water according to D.M. n. 174 dated 06.04.04.

HEAT EXCHANGER

1 stainless steel 316L straight heat exchanger suitable for steam power.

INSULATION

- HARD: High thermal insulation with ecological polyurethane hard foam.
- SOFT: NOFIRE® polyester fleece 100% made of recyclable material, with high thermal insulation. Fire resistance class B-s2d0 according to EN 13501.

Grey PVC external lining complete with top and flange cover

CATHODE PROTECTION

Magnesium anode. Models > 1500 n° 2 magnesium anode.

DRAIN

External confluence through drain connection.

GASKET- FLANGE PLATE

Asbestos-free fiber gaskets

Mild steel exchanger head with anticorrosion treatment.

WARRANTY

5 years - See general sales conditions and warranty

ACCESSORIES AND SPARE PARTS

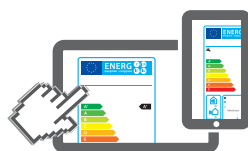
See Accessories section for the entire list



HARD FOAM INSULATION

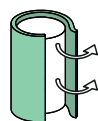


SOFT FLEECE INSULATION



www.cordivari.com/erp

On line ErP label tool



EXTRA 1 VAPORE XXB

Model	HARD FOAM insulation	HEAT EXCHANGER SURFACE INOX 316L	ENERGY EFFICIENCY CLASS
	Art. Nr.	[m²]	
500	3069052300123	1	C

EXTRA 1 VAPORE XXC

Model	DISMOUNTABLE SOFT FLEECE insulation	HEAT EXCHANGER SURFACE INOX 316L	ENERGY EFFICIENCY CLASS
	Art. Nr.	[m²]	
800	3069052300134	1,5	C
1000	3069052300135	2	C
1300	3069052300136	3	C
1500	3069052300137	3	C
2000	3069052300138	3	C
2500	3069052300109	3	
3000	3069052300111	3	
4000	3069052300113	4	
5000	3069052300115	5	

STEAM HEAT EXCHANGERS TECHNICAL DATA

Connection for electrical immersion 1 1/2" Gas F for models > 800 Lower heat Exchangers performances calculated with primary circuit at 3 bar saturated steam and production of DHW from 10° to 45°C

Model	PED	Minimum DHW production			Maximum DHW production				
		Output	DHW production		Ignition time	Output	DHW production		Ignition time
		[kW]	[l/h]	[l/10']	[min]	[kW]	[l/h]	[l/10']	[min]
500	Art. 4.3	141	3464	1189	9	114	2793	1077	11
800	Cat. I	212	5196	1869	9	171	4189	1701	12
1000	Cat. I	282	6928	2463	9	227	5585	2239	11
1500	Cat. I	423	10393	3554	9	341	8378	3218	11
2000	Cat. I	423	10393	4228	12	341	8378	3892	15
2500	Cat. I	423	10393	4571	13	341	8378	4235	17
3000	Cat. I	423	10393	5438	17	341	8378	5102	22
4000	Cat. I	564	13857	7031	17	455	11171	6583	21
5000	Cat. I	705	17321	9097	17	568	13963	8537	22

Accessories on request

"Easy Control" Electronic Display

ART. NR.	FOR MODELS
5005000310002	XXC
5005000310003	XXB



Thermometer

Art. Nr.
5032240000107
5 units box



EXTRA1 INOX VAPORE

316 L STAINLESS STEEL CALORIFIERS WITH 1 EXTRACTABLE HEAT EXCHANGER

FOR STEAM GENERATOR

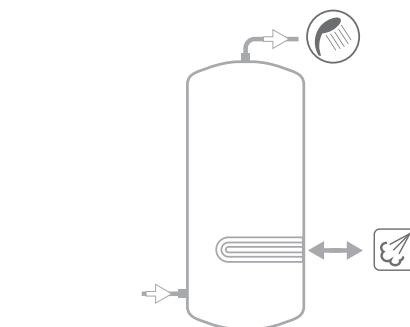
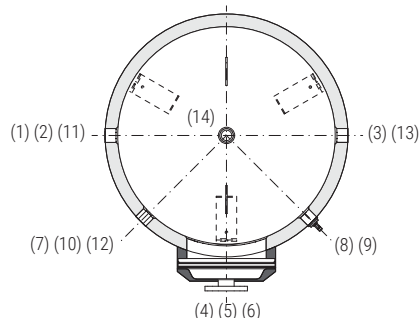
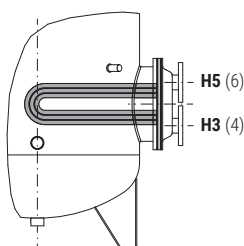
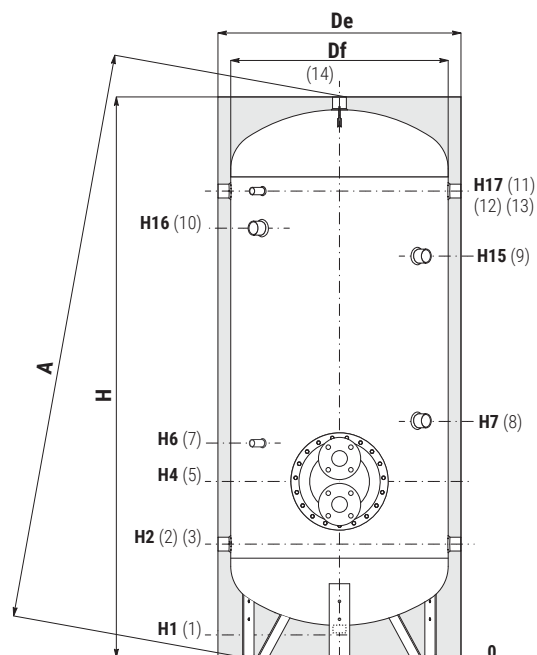
STORAGE		HEAT EXCHANGER	
Pmax	Tmax	Pmax	Tmax
6 bar	95 °C	6 bar	165 °C



CORDIVARI Lab
TÜV Rheinland Energie und Umwelt GmbH states that test procedures and Cordivari LAB are certified conforming to European standard EN 15332, as indicated by Ecodesign ErP Directive.

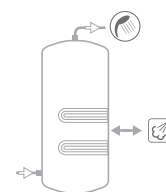


ASK ALWAYS FOR
CERTIFIED LABORATORIES
DATA RESULTS



- 1 Drain
- 2 Domestic cold water circuit inlet
- 3 Alternative domestic cold water circuit inlet or connection for more boilers
- 4 Outlet for condense
- 5 Heat exchanger flange
- 6 Steam circuit inlet
- 7 Connection for instrumentation 1/2" Gas F
- 8 Connection for magnesium anode 1 1/4" Gas F
- 9 Connection for 2nd anode 1 1/4" Gas F (only for models > 1500)
- 10 Connection for electrical immersion 1" 1/2 Gas F For models > 800 connection 2" Gas F
- 11 Connection for recirculation or for domestic hot water
- 12 Connection for instrumentation 1/2" Gas F
- 13
- 14 Domestic hot water outlet

Models with 2 heat exchangers are available on request



Model	Volume [lt]	Df (vers. XXC) [mm]	De (vers. XXC) [mm]	De (vers. XXB)	H	A	H1	H2	H3	H4	H5	H6	H7
[mm]													
500	504	//	//	750	1861	1899	141	426	421	511	601	621	811
800	762	790	1010	//	1893	1945	113	428	473	563	653	713	863
1000	905	800	1020	//	2212	2270	112	437	482	572	662	722	922
1300	1277	950	1210	//	2193	2275	118	433	478	568	658	718	918
1500	1403	1000	1260	//	2177	2266	112	447	592	682	772	832	982
2000	2024	1250	1510	//	2099	2231	134	529	664	754	844	904	1004
2500	2320	1250	1350	//	2299	2396	134	529	664	754	844	904	954
3000	2925	1250	1350	//	2799	2880	134	529	664	754	844	904	1014
4000	3776	1400	1500	//	2872	2969	117	557	737	842	992	1017	1022
5000	4995	1600	1700	//	2909	3031	94	564	639	789	939	964	1019

Model	H15	H16	H17	5	1	2-3 11-13	4 6	7-12	8	9	10	14
[mm]												
500	//	1380	1536	Øe 380	Connections Gas F							
800	//	1382	1538	Øe 380	3/4"	1" 1/4	DN50 PN16	1/2"	1" 1/4	//	1" 1/2	1" 1/4
1000	//	1642	1797	Øe 380	3/4"	1" 1/4	DN50 PN16	1/2"	1" 1/4	//	1" 1/2	1" 1/2
1300	//	1638	1793	Øe 380	1"	1" 1/2	DN50 PN16	1/2"	1" 1/4	//	2"	1" 1/2
1500	//	1602	1757	Øe 380	1"	1" 1/2	DN50 PN16	1/2"	1" 1/4	1" 1/4	2"	2"
2000	1524	1473	1629	Øe 380	1"	2"	DN50 PN16	1/2"	1" 1/4	1" 1/4	2"	2"
2500	1794	1710	1879	Øe 380	1"	2"	DN50 PN16	1/2"	1" 1/4	1" 1/4	2"	2"
3000	2294	2210	2369	Øe 380	1"	2"	DN50 PN16	1/2"	1" 1/4	1" 1/4	2"	2"
4000	2302	2225	2397	Øe 430	1"	2"	DN50 PN16	1/2"	1" 1/4	1" 1/4	2"	2"
5000	2319	2159	2404	Øe 430	1"	2"	DN50 PN16	1/2"	1" 1/4	1" 1/4	2"	2"