

PIASTRATERM® SLB

POLYWARM® COATED DOMESTIC HOT WATER ACCUMULATION TANK
WITH STAINLESS STEEL BRAZED PLATE HEAT EXCHANGER



APPLICATION

Production and storage of domestic hot water.

MATERIAL

Mild steel Polywarm® coated (Attestation ACS - SSICA - DVGW - W270 - UBA - WRAS)

HEAT EXCHANGER

Insulated stainless steel 316L brazed plate heat exchanger.

INSULATION

High thermal insulation with ecological hard polyurethane foam.
Grey PVC external lining

CATHODE PROTECTION

Magnesium anode. Models > 1500 n° 2 magnesium anode.

DRAIN

External confluence through drain connection.

Models > 1000 external confluence through drain pipe.

GASKET- FLANGE PLATE

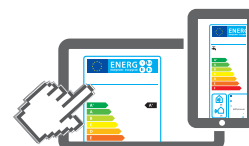
Silicone gaskets suitable for alimentary use for max temperature up to 200°C. Mild steel inspection flange plate with Polywarm®

WARRANTY

5 years - See general sales conditions and warranty

ACCESSORIES AND SPARE PARTS

See Accessories section for the entire list.




www.cordivari.com/erp

On line ErP label tool

PIASTRATERM® SLB WB

ENERGY EFFICIENCY CLASS

FASTRA TERM SLB30		HARD FOAM insulation							
Model		Nr. of plates (model SLB30)							
		14	20	30	40	50			
200	Art. Nr.	3170161722101	3170161722112				C		
300	Art. Nr.	3170161722111					C		
500	Art. Nr.	3170161722121	3170161722122	3170161722123	3170161722124	3170161722125	C		
800	Art. Nr.	3170161722132	3170161722133	3170161722134	31701617221038	C			
1000	Art. Nr.					3170161722143	3170161722144	3170161722145	C
1500	Art. Nr.					3170161722154	3170161722155	C	
2000	Art. Nr.					3170161722165	C		
80 10/45	Pot. kW	38	72	120	150	200			
	D.H.W. lt./h	887	1680	2801	3501	4668			
65 10/45	Pot. kW	21	42	74	95	129			
	D.H.W. lt./h	483	972	1722	2228	3019			

ELECTRICAL IMMERSION HEATERS

ELECTRIC IMMERSION HEATERS										
Mod.	Volume of water heated by the electrical immersion [lt]	MONOPHASE			THREEPHASE					
		1,5 kW	2 kW	3 kW	4 kW	5 kW	6 kW	9 kW	12 kW	
		52400000000051	52400000000052	52400000000053	52400000000047	52400000000048	52400000000049	52400000000050	52400000000031	
		Ignition time from 10 °C to 45 °C with immersion heaters [min]			Ignition time from 10 °C to 45 °C with immersion heaters [min]					
200	49	87	65	44	//	//	//	//	//	
300	76	136	102	68	//	//	//	//	//	
500	127	228	171	114	//	//	//	//	//	
800	178	318	239	159	//	//	//	//	//	
1000	243	436	327	218	163	131	109	73	54	
1500	288	516	387	258	194	155	129	86	65	
2000	443	793	595	396	297	238	198	132	99	

Accessories on request

"Easy Control" Electronic Display

ART. NR.	FOR MODELS
5005000310003	WB



Thermometer

Art. Nr.
5032240000107
5 units box



Titanium electronic anode

Art. Nr.	Model
52000000000008	200, 300
52000000000009	500, 800
52000000000011	1000, 1500
52000000000013	2000



PIASTRATERM® SLB

POLYWARM® COATED DOMESTIC HOT WATER ACCUMULATION TANK
WITH STAINLESS STEEL BRAZED PLATE HEAT EXCHANGER

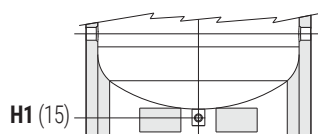
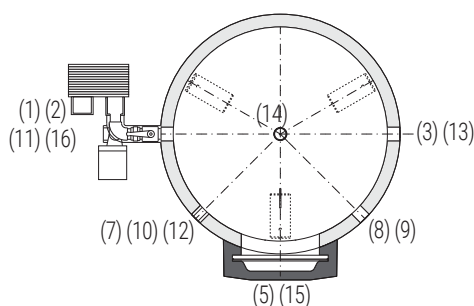
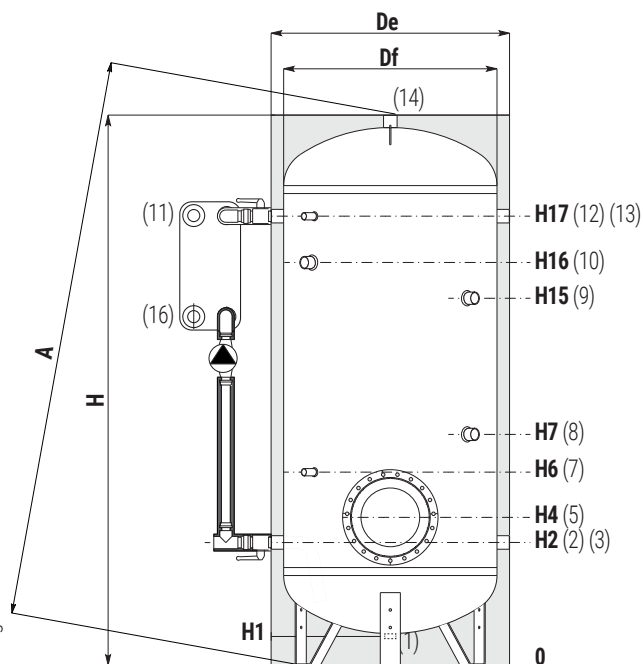
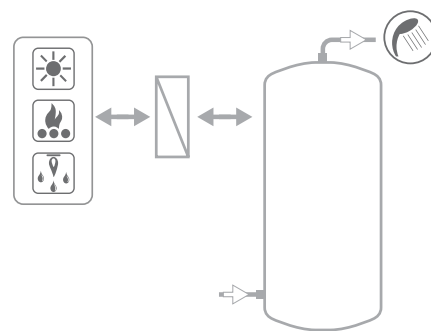
Model	STORAGE		HEAT EXCHANGER		D.H.W. HARDNESS
	Pmax	Tmax	Pmax	Tmax	F max
200 ÷ 1000	8 bar	90 °C	10 bar	99 °C	30 °f
1500 ÷ 2000	6 bar				



CORDIVARI Lab
TÜV Rheinland Energie
und Umwelt GmbH states
that test procedures and
Cordivari LAB are certified conforming
to European standard EN 15332, as
indicated by Ecodesign ErP Directive.



**ASK ALWAYS FOR
CERTIFIED LABORATORIES
DATA RESULTS**



Models from 1500 to 5000 have two
grips on the bottom which allow
the use of forklift when handling and
drain pipe already fitted.

1	Drain 1" 1/4 Gas F. For model 1000 connection 1" 1/2 Gas F
2	Domestic cold water circuit inlet
3	Alternative Sanitary water inlet or connection for more boilers
5	Blind flange for inspection Øe 300
7	Connection for instrumentation 1/2" Gas F
8	Connection for magnesium anode 1" 1/4 Gas F
9	Connection for 2 nd anode 1" 1/4 Gas F (only for models > 1500)
10	Connection for electrical immersion 1" 1/2 Gas F For models > 800 connection 2" Gas F
11	Entry heating water from the buffer 1" 1/4 Gas F
12	Connection for instrumentation 1/2" Gas F
13	Recirculation
14	Domestic hot water outlet
15	Drain 1" Gas F (for models > 1000)
16	Heating water back to the buffer 1" 1/4 Gas F

Model	Volume [litres]	De	H	A	H1	H2	H4	H6	H7	H15	H16	H17	2-3 13	14
[mm]														
200	192	550	1449	1550	85	325	410	520	650	//	1075	1185	1"1/4	1"1/4
300	293	650	1499	1634	85	350	435	545	735	//	1100	1210	1"1/4	1"1/4
500	501	750	1800	1950	85	375	460	570	760	//	1329	1485	1"1/4	1"1/4
800	792	900	2135	2317	85	405	490	600	870	//	1610	1765	1"1/4	1"1/4
1000	1041	1000	2221	2436	105	458	543	653	993	//	1664	1818	1"1/2	1"1/2
1500	1443	1100	2415	2654	109	440	525	635	1075	//	1895	2050	1"1/2	2"
2000	1975	1300	2492	2811	91	467	542	652	842	1952	1877	2057	2"	2"