

VASO INERZIALE INOX

316 L STAINLESS STEEL DOMESTIC HOT WATER ACCUMULATION TANK



APPLICATION

Domestic hot water storage

MATERIAL

Stainless Steel 316 L suitable for domestic hot water according to D. M. n. 174 dated 06.04.04.

INSULATION

- HARD: High thermal insulation with ecological polyurethane hard foam.
- SOFT: NOFIRE® polyester fleece 100% made of recyclable material, with high thermal insulation. Fire resistance class B-s2d0 according to EN 13501.

Grey PVC external lining complete with top and flange cover

CATHODE PROTECTION

Magnesium anode. - Models > 1500 n° 2 magnesium anodes.

DRAIN

External confluence through drain connection.

GASKET- FLANGE PLATE

Silicone gaskets suitable for alimentary use; Stainless steel exchanger head.

WARRANTY

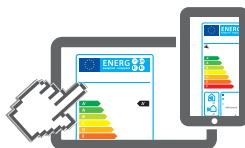
5 years - See general sales conditions and warranty

ACCESSORIES AND SPARE PARTS

See Accessories section for the entire list.

EXCHANGER
316 L
STAINLESS
STEEL

HARD FOAM INSULATION



www.cordivari.com/erp

On line ErP label tool

SOFT FLEECE INSULATION



VASO INERZIALE XB

ENERGY
EFFICIENCY
CLASS

Model	HARD FOAM insulation	Art. Nr.	ErP
200	3060052140422		C
300	3060052140423		C
500	3060052140424		C

VASO INERZIALE XC

ENERGY
EFFICIENCY
CLASS

Model	DISMOUNTABLE SOFT FLEECE insulation	Art. Nr.	ErP
800	3060052140430		C
1000	3060052140431		C
1300	3060052140432		C
1500	3060052140433		C
2000	3060052140434		C
2500	3060052140410		
3000	3060052140412		
4000	3060052140414		
5000	3060052140416		

ELECTRICAL IMMERSION HEATERS

Mod.	Volume of water heated by the electrical immersion [lt]
200	49
300	76
500	127
800	178
1000	243
1500	288
2000	443
2500	577
3000	577
4000	797
5000	1040

MONOPHASE		
1,5 kW	2 kW	3 kW
5240000000051	5240000000052	5240000000053
Ignition time from 10 °C to 45 °C with immersion heaters [min]		
87	65	44
136	102	68
228	171	114
318	239	159
436	327	218
516	387	258
793	595	396
1033	775	517
1033	775	517
1428	1071	714
1864	1398	932

THREEPHASE				
4 kW	5 kW	6 kW	9 kW	12 kW
5240000000047	5240000000048	5240000000049	5240000000050	5240000000031
Ignition time from 10 °C to 45 °C with immersion heaters [min]				
//	//	//	//	//
//	//	//	//	//
//	//	//	//	//
//	//	//	//	//
163	131	109	73	54
194	155	129	86	65
297	238	198	132	99
387	310	258	172	129
387	310	258	172	129
535	428	357	238	178
699	559	466	311	233

Accessories on request

"Easy Control" Electronic Display

ART. NR.	FOR MODELS
5005000310002	XXC
5005000310003	XXB



VASO INERZIALE INOX

316 L STAINLESS STEEL DOMESTIC HOT WATER ACCUMULATION TANK

STORAGE

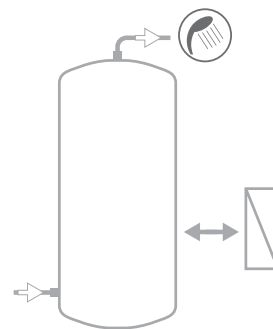
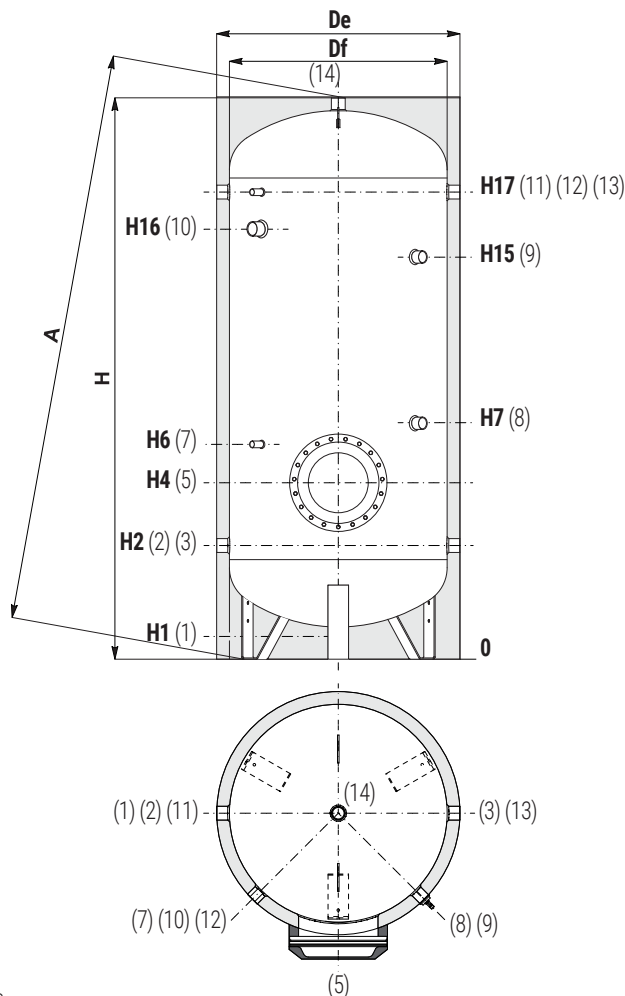
Pmax	Tmax
6 bar	95 °C



CORDIVARI Lab
TÜV Rheinland Energie und Umwelt GmbH states that test procedures and Cordivari LAB are certified conforming to European standard EN 15332, as indicated by Ecodesign ErP Directive.



ASK ALWAYS FOR
CERTIFIED LABORATORIES
DATA RESULTS



- 1 Drain 3/4" Gas F for models da 200 a 1000;
1" Gas F for models > 1000
- 2 Domestic cold water circuit inlet / Delivery to external heat exchanger
- 3 Alternative D.H.W. inlet / To the plate heat exchanger
- 5 Blind flange for inspection
- 7 Connection for instrumentation 1/2" Gas F
- 8 Connection for magnesium anode 1 1/4" Gas F
- 9 Connection for 2nd anode 1 1/4" Gas F (for models > 1500)
- 10 Connection for electrical immersion 1" 1/2 Gas F
For models > 800 connection 2" Gas F
- 11 Recirculation / from plate heat exchanger
- 12 Connection for instrumentation 1/2" Gas F
- 13 Recirculation or DHW outlet
- 14 Domestic hot water outlet

Model	Volume [litres]	Df (vers. XC) [mm]	De (vers. XC)	De (vers. XB)	H	A	H1	H2	H4	H6	H7
200	191	//	//	550	1451	1477	81	316	341	511	701
300	293	//	//	650	1569	1602	149	409	434	604	794
500	502	//	//	750	1861	1899	141	426	451	621	811
800	760	790	1010	//	1943	1993	113	428	483	623	863
1000	902	800	1020	//	2212	2297	112	437	492	632	922
1300	1274	950	1210	//	2193	2255	118	433	488	628	918
1500	1399	1000	1260	//	2127	2245	112	447	502	642	982
2000	2019	1250	1510	//	2049	2205	134	529	574	714	1004
2500	2320	1250	1350	//	2299	2617	134	529	574	714	954
3000	2925	1250	1350	//	2799	3065	134	529	574	714	1014
4000	3776	1400	1500	//	2872	3195	117	557	602	742	1022
5000	4995	1600	1700	//	2909	3320	94	564	609	749	1019

Model	H15	H16	H17	5	1	2-3 11-13	7-12	8	9	10	14
	[mm]				Connections Gas F						
200	//	1066	1176	Øe 180	3/4"	1"1/4	1/2"	1"1/4	//	1"1/2	1"1/4
300	//	1159	1269	Øe 180	3/4"	1"1/4	1/2"	1"1/4	//	1"1/2	1"1/4
500	//	1380	1536	Øe 180	3/4"	1"1/4	1/2"	1"1/4	//	1"1/2	1"1/4
800	//	1382	1538	Øe 240	3/4"	1"1/4	1/2"	1"1/4	//	1"1/2	1"1/2
1000	//	1642	1797	Øe 240	3/4"	1"1/2	1/2"	1"1/4	//	2"	1"1/2
1300	//	1638	1793	Øe 240	1"	1"1/2	1/2"	1"1/4	//	2"	2"
1500	//	1602	1757	Øe 240	1"	1"1/2	1/2"	1"1/4	1"1/4	2"	2"
2000	1524	1473	1629	Øe 240	1"	2"	1/2"	1"1/4	1"1/4	2"	2"
2500	1794	1710	1879	Øe 240	1"	2"	1/2"	1"1/4	1"1/4	2"	2"
3000	2294	2210	2369	Øe 240	1"	2"	1/2"	1"1/4	1"1/4	2"	2"
4000	2302	2225	2397	Øe 240	1"	2"	1/2"	1"1/4	1"1/4	2"	2"
5000	2319	2159	2404	Øe 240	1"	2"	1/2"	1"1/4	1"1/4	2"	2"