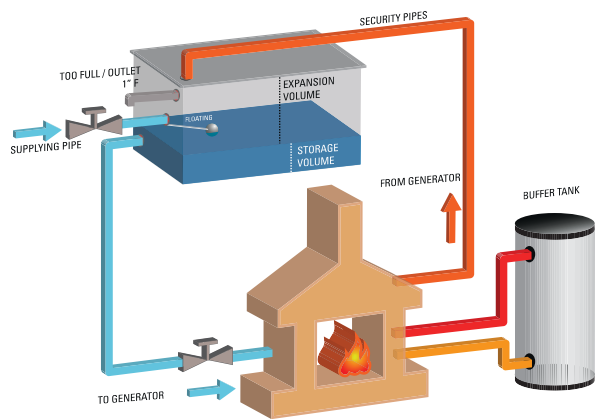
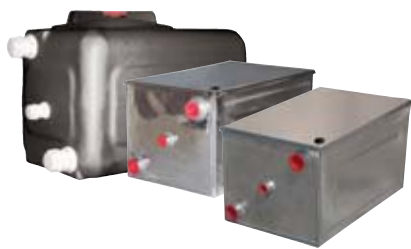


OPEN EXPANSION VESSEL

304 STAINLESS STEEL / GALVANIZED / POLYETHYLENE

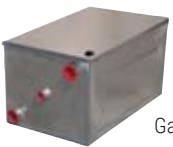


Opened Expansion tanks are used as safety accessories in the heating systems where, due to legal reason it is forbidden to install closed expansion tanks systems. In Italy, for the water fireplaces, they are still one of the most simple and economic solution. Expansion tank is composed by a cover unit where all the security piping of outlet pipe for too full, supplying and systems charge, should arrive. Its rule is to merge the water in excess due caused by temperature increase. Expansion Tank should be placed on the highest point reached by the water and should have an expanding volume not less than the expansion volume developed by all the water contained into the system, whose value should be declared in the project.

Expansion volume needed in the system is calculated by the following formula:
 $Ve = C \times e$
Where C is the water contained into the system and "e" is equal to the difference between the expansion factor of the water at the minimum conceivable temperature with sleeping system and the expansion factor of the water at boiling temperature of atmospheric pressure. Considering the first water temperature equal to 10°C and the boiling one at 100°C
"e" = 0.0431
It is possible to connect more than one tank together.



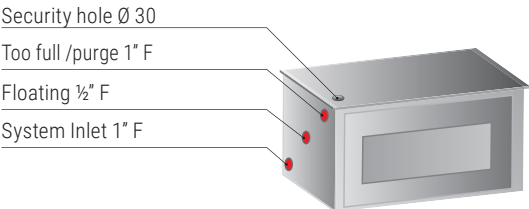
304 Stainless steel



Galvanized



Polyethylene



EXPANSION VESSEL INOX

Model	304 Stainless steel	Dimension HxLxP	Expansion volume
	Art. Nr.	[mm]	[litres]
30	3941014010001	275x455x245	7,5
50	3941014010002	276x455x430	30

EXPANSION VESSEL Z

Model	Galvanized	Dimension HxLxP	Expansion volume
	Art. Nr.	[mm]	[litres]
30	3941164010001	275x455x245	7,5
50	3941164010002	276x455x430	30

VASO DI ESPANS. POLIET.

Model	Polyethylene	Dimension HxLxP	Expansion volume
	Art. Nr.	[mm]	[litres]
30	3500264011001	319x491x280	7,5

For technical and commercial information,
see CORDIVARI SERBATOI E TRATTAMENTO ACQUE CATALOGUE.