

# EXTRA 1 INOX

316 L STAINLESS STEEL CALORIFIERS WITH 1 EXTRACTABLE HEAT EXCHANGER



## APPLICATION

Production and storage of domestic hot water.

## MATERIAL

Stainless Steel 316 L suitable for domestic hot water according to D.M. n. 174 dated 06.04.04.

## HEAT EXCHANGER

316L Stainless Steel Antilegionella® heat exchanger, with tubes bent to the bottom

## INSULATION

- HARD: High thermal insulation with ecological polyurethane hard foam.  
- SOFT: NOFIRE® polyester fleece 100% made of recyclable material, with high thermal insulation. Fire resistance class B-s2d0 according to EN 13501.

Grey PVC external lining complete with top and flange cover

## CATHODE PROTECTION

Magnesium anode. - Models > 1500 n° 2 magnesium anodes.

## DRAIN

External confluence through drain connection.

## GASKET- FLANGE PLATE

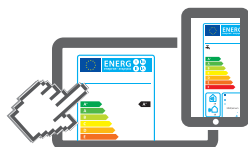
Silicone gaskets suitable for alimentary use; Mild steel exchanger head with anticorrosion treatment.

## WARRANTY

5 years - See general sales conditions and warranty

## ACCESSORIES AND SPARE PARTS

See Accessories section for the entire list.



[www.cordivari.com/erp](http://www.cordivari.com/erp)

On line ErP label tool

## EXTRA 1 XXB

Model	HARD FOAM insulation	HEAT EXCHANGER SURFACE INOX 316L [m²]	ENERGY EFFICIENCY CLASS ErP
Art. Nr.			
200	3072052300422	0,5	C
300	3072052300423	0,75	C
500	3072052300424	1	C

## EXTRA 1 XXC

Model	DISMOUNTABLE SOFT FLEECE insulation	HEAT EXCHANGER SURFACE INOX 316L [m²]	ENERGY EFFICIENCY CLASS ErP
Art. Nr.			
800	3072052300430	1,5	C
1000	3072052300431	2	C
1300	3072052300432	3	C
1500	3072052300433	3	C
2000	3072052300434	4	C
2500	3072052300410	5	
3000	3072052300412	6	
4000	3072052300414	8	
5000	3072052300416	10	

## ELECTRICAL IMMERSION HEATERS

Mod.	Volume of water heated by the electrical immersion [lt]	MONOPHASE			THREEPHASE				
		1,5 kW	2 kW	3 kW	4 kW	5 kW	6 kW	9 kW	12 kW
		52400000000051	52400000000052	52400000000053	52400000000047	52400000000048	52400000000049	52400000000050	52400000000031
		Ignition time from 10 °C to 45 °C with immersion heaters [min]							
200	49	87	65	44	//	//	//	//	//
300	76	136	102	68	//	//	//	//	//
500	127	228	171	114	//	//	//	//	//
800	178	318	239	159	//	//	//	//	//
1000	243	436	327	218	163	131	109	73	54
1500	288	516	387	258	194	155	129	86	65
2000	443	793	595	396	297	238	198	132	99
2500	577	1033	775	517	387	310	258	172	129
3000	577	1033	775	517	387	310	258	172	129
4000	797	1428	1071	714	535	428	357	238	178
5000	1040	1864	1398	932	699	559	466	311	233

Accessories on request

## "Easy Control" Electronic Display

ART. NR.	FOR MODELS
5005000310002	XXC
5005000310003	XXB



# EXTRA 1 INOX

316 L STAINLESS STEEL CALORIFIERS WITH 1 EXTRACTABLE HEAT EXCHANGER

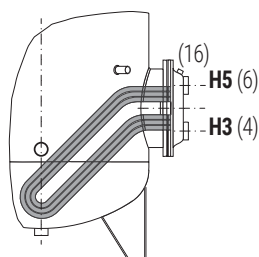
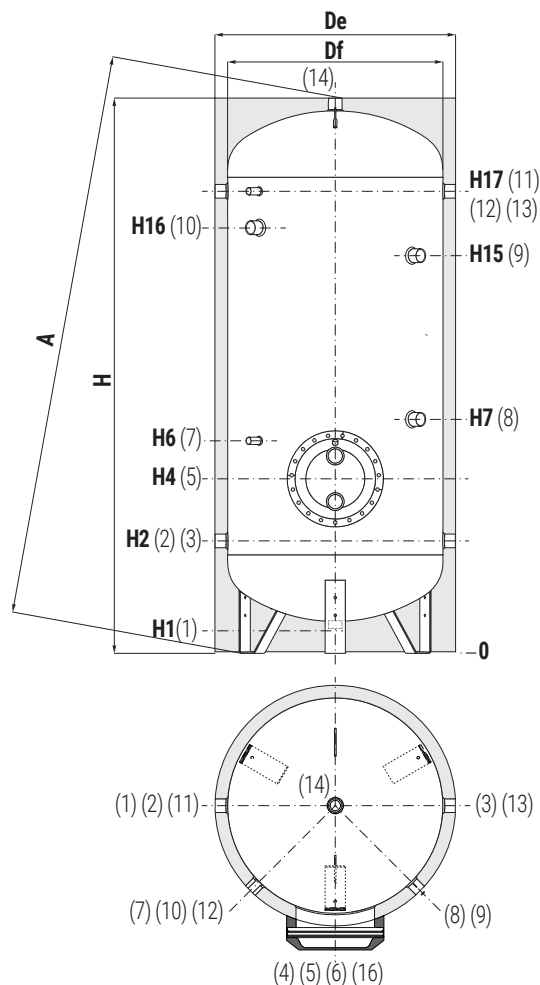
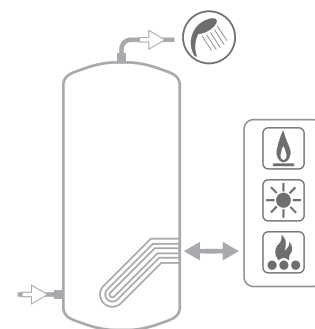
STORAGE		HEAT EXCHANGER	
Pmax	Tmax	Pmax	Tmax
6 bar	95 °C	12 bar	110 °C



**CORDIVARI Lab**  
TÜV Rheinland Energie und Umwelt GmbH states that test procedures and Cordivari LAB are certified conforming to European standard EN 15332, as indicated by Ecodesign ErP Directive.



ASK ALWAYS FOR  
CERTIFIED LABORATORIES  
DATA RESULTS



- 1** Drain 3/4" Gas F for models da 200 a 1000;  
1" Gas F for models > 1000
- 2** Domestic cold water circuit inlet
- 3** Alternative domestic cold water circuit inlet or connection for more boilers
- 4** Primary circuit outlet
- 5** Heat exchanger flange
- 6** Primary circuit inlet
- 7** Connection for instrumentation 1/2" Gas F
- 8** Connection for magnesium anode 1 1/4" Gas F
- 9** Connection for 2<sup>nd</sup> anode 1 1/4" Gas F (only for models > 1500)
- 10** Connection for electrical immersion 1 1/2" Gas F  
For models > 800 connection 2" Gas F
- 11-13** Connection for recirculation or for domestic hot water
- 12** Connection for instrumentation 1/2" Gas F
- 14** Domestic hot water outlet
- 15** Drain 1" Gas F (only for models > 1000)
- 16** Heat exchanger air purge 3/8" Gas F

Model	Volume [lt]	Df (vers. XXC) [mm]	De (vers. XXC) [mm]	De (vers. XXB) [mm]	H	A	H1	H2	H3	H4	H5	H6	H7
<b>200</b>	192	//	//	550	1451	1552	81	316	351	401	451	511	701
<b>300</b>	294	//	//	650	1569	1698	149	409	444	494	544	604	794
<b>500</b>	504	//	//	750	1861	2006	141	426	461	511	561	621	811
<b>800</b>	762	790	1010	//	1943	2008	113	428	473	563	653	713	863
<b>1000</b>	905	800	1020	//	2212	2270	112	437	482	572	662	722	922
<b>1300</b>	1277	950	1210	//	2193	2275	118	433	578	668	758	818	918
<b>1500</b>	1403	1000	1260	//	2177	2266	112	447	592	682	772	832	982
<b>2000</b>	2024	1250	1510	//	2099	2231	134	529	649	754	859	929	1004
<b>2500</b>	2320	1250	1350	//	2299	2396	134	529	649	754	859	929	954
<b>3000</b>	2925	1250	1350	//	2799	2879	134	529	709	814	919	989	1014
<b>4000</b>	3776	1400	1500	//	2872	2968	117	557	737	842	947	1017	1022
<b>5000</b>	4995	1600	1700	//	2909	3031	94	564	734	839	944	1014	1019

Model	H15	H16	H17	5	1	2-3 11-13	4-6	7-12	8	9	10	16	14
	[mm]				Connections Gas F								
<b>200</b>	//	1066	1176	Øe 300	3/4"	1 1/4"	1"	1/2"	1 1/4"	//	1 1/2"	3/8"	1 1/4"
<b>300</b>	//	1159	1269	Øe 300	3/4"	1 1/4"	1"	1/2"	1 1/4"	//	1 1/2"	3/8"	1 1/4"
<b>500</b>	//	1380	1536	Øe 300	3/4"	1 1/4"	1"	1/2"	1 1/4"	//	1 1/2"	3/8"	1 1/4"
<b>800</b>	//	1382	1538	Øe 380	3/4"	1 1/4"	2"	1/2"	1 1/4"	//	1 1/2"	3/8"	1 1/2"
<b>1000</b>	//	1642	1797	Øe 380	3/4"	1 1/2"	2"	1/2"	1 1/4"	//	2"	3/8"	1 1/2"
<b>1300</b>	//	1638	1793	Øe 380	1"	1 1/2"	2"	1/2"	1 1/4"	//	2"	3/8"	2"
<b>1500</b>	//	1602	1757	Øe 380	1"	1 1/2"	2"	1/2"	1 1/4"	1 1/4"	2"	3/8"	2"
<b>2000</b>	1524	1473	1629	Øe 430	1"	2"	2"	1/2"	1 1/4"	1 1/4"	2"	3/8"	2"
<b>2500</b>	1794	1710	1879	Øe 430	1"	2"	2"	1/2"	1 1/4"	1 1/4"	2"	3/8"	2"
<b>3000</b>	2294	2210	2369	Øe 430	1"	2"	2"	1/2"	1 1/4"	1 1/4"	2"	3/8"	2"
<b>4000</b>	2302	2225	2397	Øe 430	1"	2"	2"	1/2"	1 1/4"	1 1/4"	2"	3/8"	2"
<b>5000</b>	2319	2159	2404	Øe 430	1"	2"	2"	1/2"	1 1/4"	1 1/4"	2"	3/8"	2"