



STEFANIA

POLISHED STAINLESS STEEL



WARRANTY
10 YEARS

MATERIAL:

- Vertical collectors in polished stainless steel \varnothing 30 mm.
- Horizontal elements in polished stainless steel da 30 x10 mm.

FIXING KIT:

Brackets, airvent, hexagonal tool, plugs and screws for mounting suitable for use on compact or hollow brick, user notice.
The kit is certified from TÜV in compliance with VDI 6036-class 4.

PACKAGING:

Carton angular and profiles protected by a recyclable film in polyethylene. User notice included.

FEATURES:

It is totally made in stainless steel with an unalterable finishing guaranteed during the years.

ACCESSORIES:

See Accessories chapter

Functioning:	<input checked="" type="checkbox"/> Hot water	<input checked="" type="checkbox"/> Electric (see page 354)	<input checked="" type="checkbox"/> Dual energy
--------------	---	---	---

P. Max: 8 bar	Functioning: hot water	T. Max: 110° C	Connections: 2 x 1/2" gas - 1 x 1/2" gas for airvent
---------------	------------------------	----------------	--

CERTIFICATIONS



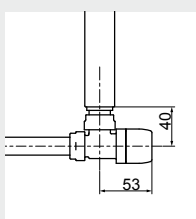
ACCESSORIES



Kristal valve square with thermostatic option-chromed

Copper conn. \varnothing 12/14/15
Art. nr. 5991990311165

Multilayer conn. \varnothing 16
Art. nr. 5991990311166



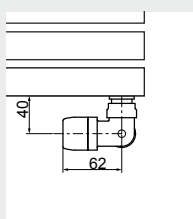
Quotes for square Kristal valves with thermostatic option



Kristal corner valve with thermostatic option-chromed

Copper conn. \varnothing 12/14/15
Art. nr. 5991990301148

Multilayer conn. \varnothing 16
Art. nr. 5991990301147



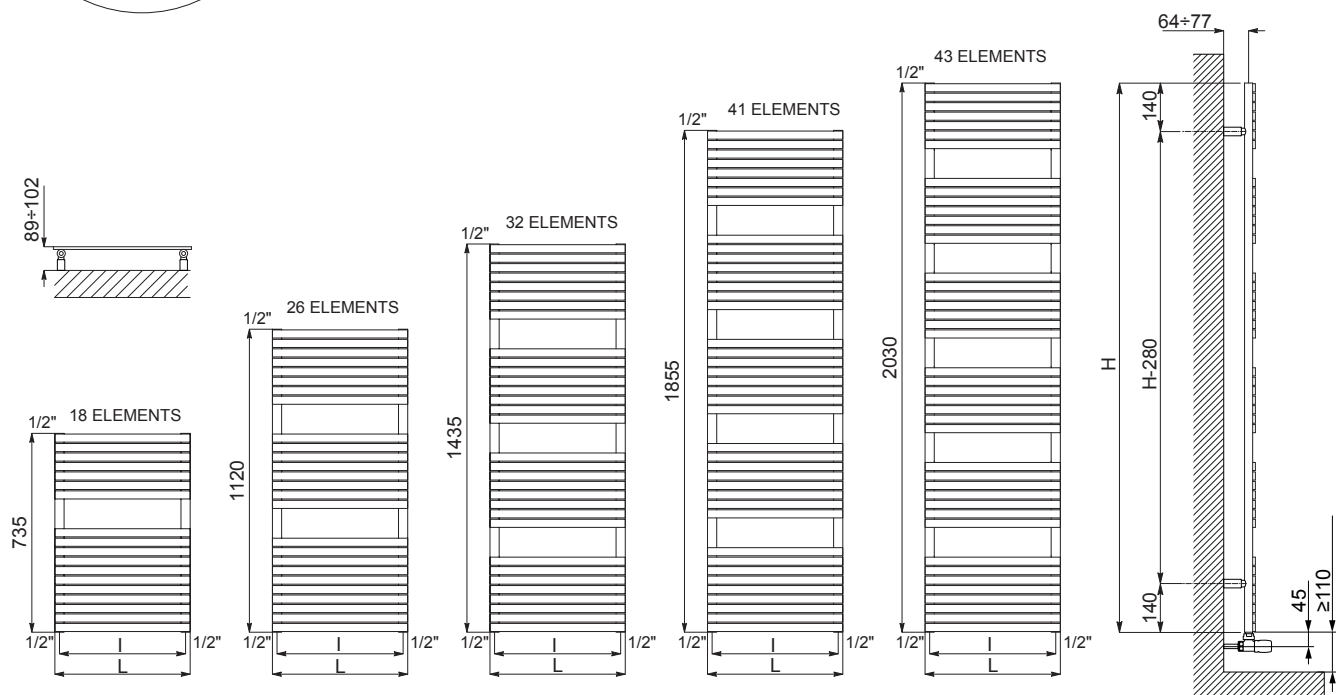
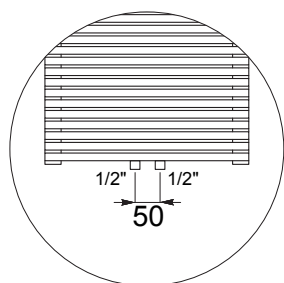
Quotes for corner Kristal valves with thermostatic option



Kit 2 hooks-polished stainless steel

Art. nr. 5991990010218

Accessories and spare parts - see Accessories chapter



Quotes for Kristal valves

STEFANIA POLISHED STAINLESS STEEL

Pipe Centres 50 mm				Thermal output [Watt]					Dual energy kit [Watt]		
Height [mm]	WIDTH L [mm]	Pipe Centres I [mm]	Art. nr.	Art. nr.	Dry Weight [Kg]	Surface [m2]	Water con- tent [lt]	$\Delta t=50^{\circ}\text{C}$		$\Delta t=30^{\circ}\text{C}$	Exp. n
735	400	370	3551610130100	3551610130120	8,0	0,71	2,2	218	119	1,1913	300
	500	470	3551610130104	3551610130124	9,5	0,85	2,5	362	197	1,1918	300
1120	400	370	3551610130101	3551610130121	11,6	1,04	3,2	300	161	1,2244	400
	500	470	3551610130105	3551610130125	13,8	1,25	3,7	365	196	1,2194	400
	600	570	3551610130109	3551610130129	16,0	1,45	4,2	431	232	1,216	500
1435	400	370	3551610130102	3551610130122	14,4	1,29	4,0	368	194	1,2492	400
	500	470	3551610130106	3551610130126	17,1	1,55	4,6	450	239	1,2401	500
	600	570	3551610130110	3551610130130	19,8	1,80	5,3	531	283	1,2338	500
1855	400	370	3551610130103	3551610130123	18,4	1,66	5,2	484	251	1,2865	500
	500	470	3551610130107	3551610130127	21,9	1,99	6,0	591	309	1,2712	600
	600	570	3551610130111	3551610130131	25,4	2,32	6,8	697	366	1,2606	700
2030	500	470	3551610130108	3551610130128	23,2	2,10	6,4	625	325	1,2781	700
	600	570	3551610130112	3551610130132	26,8	2,44	7,2	737	386	1,2665	900
	800	770	3551610130113	3551610130133	34,2	3,13	8,8	962	508	1,2515	1200

For output at different Δt than 50°C , please refer to the following formula: desired output = output at $\Delta t 50^{\circ}\text{C}$ x (desired $\Delta t/50$)ⁿ