



SANDY

POLISHED STAINLESS STEEL



WARRANTY
10 YEARS

MATERIAL:

- Vertical collectors in polished stainless steel da \varnothing 38 mm.
- Horizontal elements in polished stainless steel \varnothing 25 mm.

FIXING KIT:

Brackets, airvent, hexagonal tool, plugs and screws for mounting suitable for use on compact or hollow brick, user notice.
The kit is certified from TÜV in compliance with VDI 6036-class 4.

PACKAGING:

Carton angular and profiles protected by a recyclable film in polyethylene. User notice included.

FEATURES:

It is totally made in stainless steel with an unalterable finishing guaranteed during the years.

ACCESSORIES:

See Accessories chapter

Functioning:	<input checked="" type="checkbox"/> Hot water	<input checked="" type="checkbox"/> Electric (see page 350)	<input checked="" type="checkbox"/> Dual energy
--------------	---	---	---

P. Max: 8 bar	Functioning: hot water	T. Max: 110° C	Connections: 2 x 1/2" gas - 1 x 1/2" gas for airvent
---------------	------------------------	----------------	--

CERTIFICATIONS



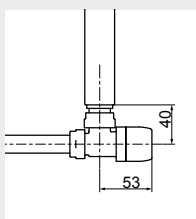
ACCESSORIES



Kristal valve square with thermostatic option-chromed

Copper conn. \varnothing 12/14/15
Art. nr. 5991990311165

Multilayer conn. \varnothing 16
Art. nr. 5991990311166

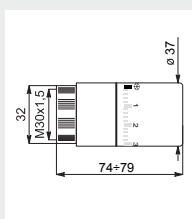


Quotes for square Kristal valves with thermostatic option



Chromed thermostatic head

(Kit 2 pieces)
Art. nr. 5035270710015



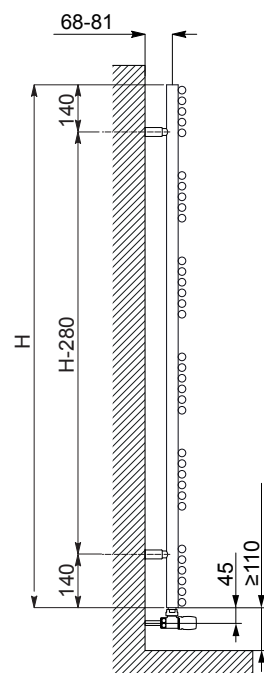
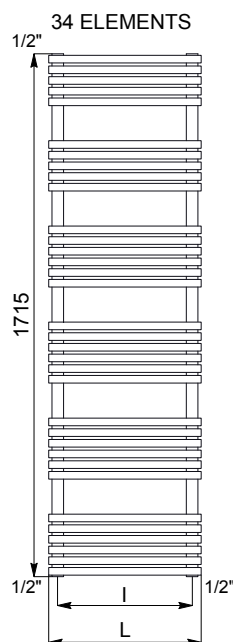
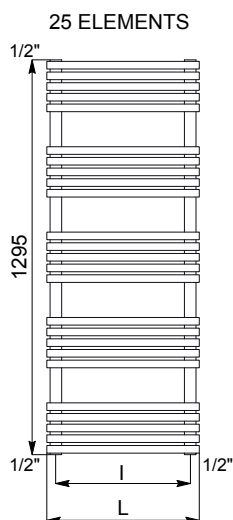
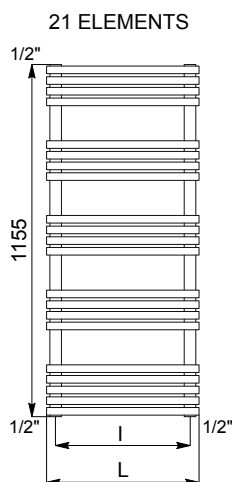
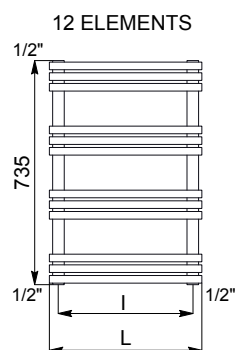
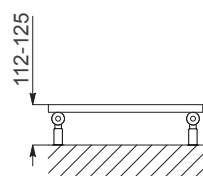
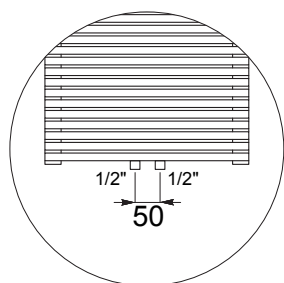
Thermostatic head quotes



Kit 2 hooks-polished stainless steel

Art. nr. 5991990010215

Accessories and spare parts - see Accessories chapter



Quotes for Kristal valves

SANDY POLISHED STAINLESS STEEL

Height [mm]	WIDTH L [mm]	Pipe Centres I [mm]	Art. nr.	Pipe Centres 50 mm					Thermal output [Watt]		Dual energy kit [Watt]
				Art. nr.	Dry Weight [Kg]	Surface [m2]	Water con- tent [lt]	$\Delta t=50^{\circ}\text{C}$	$\Delta t=30^{\circ}\text{C}$	Exp. n	
735	400	342	3551440130250	3551440130270	5,8	0,55	3,3	217	117	1,2120	--
	500	442	3551440130254	3551440130274	6,7	0,64	3,8	256	139	1,2020	300
1155	400	342	3551440130251	3551440130271	9,7	0,93	5,6	340	181	1,2357	400
	500	442	3551440130255	3551440130275	11,2	1,10	6,4	408	219	1,2166	500
	600	542	3551440130258	3551440130278	12,7	1,26	7,3	476	257	1,2030	500
1295	800	742	3551440130261	3551440130281	15,6	1,59	9,0	612	334	1,1850	700
	400	342	3551440130252	3551440130272	11,3	1,09	6,5	396	210	1,2462	400
	500	442	3551440130256	3551440130276	13,1	1,29	7,5	475	254	1,2231	500
	600	542	3551440130259	3551440130279	14,9	1,49	8,5	555	300	1,2066	600
1715	800	742	3551440130262	3551440130282	18,4	1,88	10,5	715	390	1,1849	700
	400	342	3551440130253	3551440130273	15,2	1,47	8,7	528	276	1,2699	600
	500	442	3551440130257	3551440130277	17,7	1,75	10,1	630	335	1,2377	700
	600	542	3551440130260	3551440130280	20,1	2,01	11,5	733	394	1,2148	900
	800	742	3551440130263	3551440130283	24,8	2,54	14,2	939	513	1,1845	900

For output at different Δt than 50°C , please refer to the following formula: $\text{desired output} = \text{output at } \Delta t 50^{\circ}\text{C} \times (\text{desired } \Delta t/50)^{1,4}$