



# KATIA VX

## MATERIAL:

- Vertical collectors in painted mild steel  $\varnothing$  30 mm.
- Horizontal heating elements in painted mild steel 15x20 mm.

## FIXING KIT:

Brackets, airvent, hexagonal tool, plugs and screws for mounting suitable for use on compact or hollow brick, user notice.

The kit is certified from TÜV in compliance with VDI 6036-class 4.

## PACKAGING:

Carton angular and profiles protected by a recyclable film in polyethylene. User notice included.

## PAINTING PROCESS:

Painted with ecological epoxy powders. (Certificate DIN 55900-1,-2)

## COLOURS:

Radiator and accessories: standard white colour RAL 9010-R01.  
For other colours see Colour chart chapter.

## ACCESSORIES:

See Accessories chapter

Functioning:	<input checked="" type="checkbox"/> Hot water		<input checked="" type="checkbox"/> Dual energy
--------------	---	--	---

P. Max: 8 bar	Functioning: hot water	T. Max: 110° C	Connections: 2 x 1/2" gas - 1 x 1/2" gas for airvent
---------------	------------------------	----------------	--

## CERTIFICATIONS



## ACCESSORIES



**Kristal valve square  
With thermostatic option  
White R01 - ral 9010**

Copper conn.  $\varnothing$  12/14/15  
Art. nr. 5991990311161

Multilayer conn.  $\varnothing$  16  
Art. nr. 5991990311160



**Kit 2 Hooks  
WHITE RAL 9010 - R01**

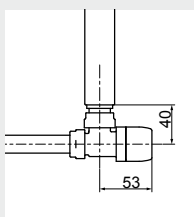
Art. nr. 5991990310391



**Towel bar  
WHITE RAL 9010 - R01  
(width 440 mm)**

Available with width  
 $\geq$  500 mm

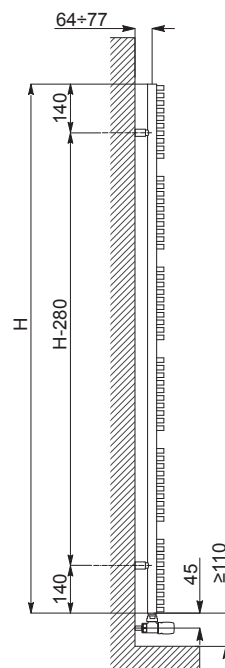
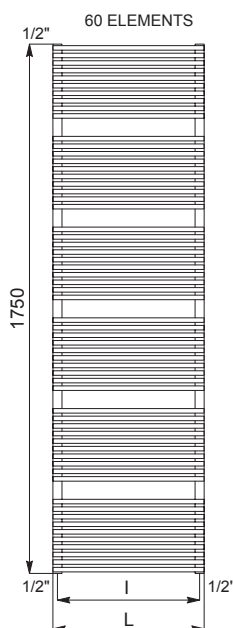
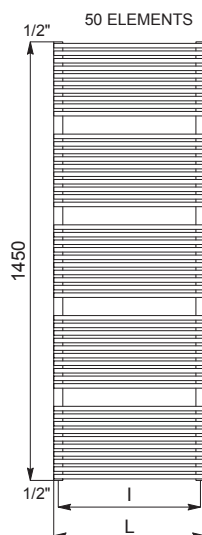
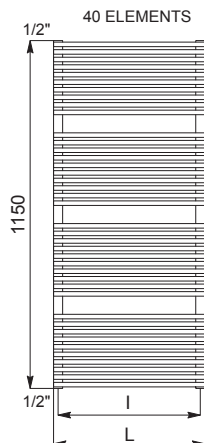
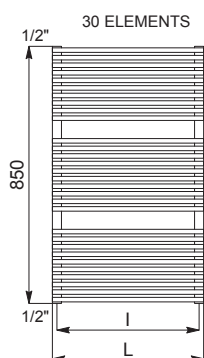
Art. nr. 5991990331129



Quotes for square Kristal valves  
with thermostatic option

If ordered separately from the radiator, the accessories are available in standard white only.

Accessories and spare parts - see Accessories chapter



KATIA VX

Art. nr. are referred to colour WHITE R01 - RAL 9010 version.

For output at different  $\Delta t$  than 50°C, please refer to the following formula: **desired output = output at  $\Delta t$  50°C x (desired  $\Delta t$ /50)<sup>n</sup>**