



# DORY



EUROPEAN  
WARRANTY

## MATERIAL:

- Vertical collectors in painted mild steel  $\varnothing$  30 mm.
- Horizontal heating elements in painted mild steel da 50x10 mm.

## FIXING KIT:

Brackets, airvent, hexagonal tool, plugs and screws for mounting suitable for use on compact or hollow brick, user notice.

The kit is certified from TÜV in compliance with VDI 6036-class 4.

## PACKAGING:

Carton angular and profiles protected by a recyclable film in polyethylene. User notice included.

## PAINTING PROCESS:

Painted with ecological epoxy powders. (Certificate DIN 55900-1,-2)

## COLOURS:

Radiator and accessories: standard white colour RAL 9010-R01.

For other colours see Colour chart chapter.

## ACCESSORIES:

See Accessories chapter

Functioning:	<input checked="" type="checkbox"/> Hot water	<input checked="" type="checkbox"/> Electric (see page 342-368)	<input checked="" type="checkbox"/> Dual energy (see page 370-524)
--------------	---	---	--

P. Max: 5 bar	Functioning: hot water	T. Max: 110° C	Connections: 2 x 1/2" gas - 1 x 1/2" gas for airvent
---------------	------------------------	----------------	--

## CERTIFICATIONS



## ACCESSORIES



**Kristal valve square  
With thermostatic option  
White R01 - ral 9010**

Copper conn.  $\varnothing$  12/14/15  
Art. nr. 5991990311161

Multilayer conn.  $\varnothing$  16  
Art. nr. 5991990311160



**Kit 2 Hooks  
WHITE RAL 9010 - R01**

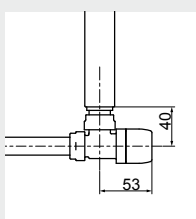
Art. nr. 5991990310389



**Towel bar  
WHITE RAL 9010 - R01  
(width 390 mm)**

Available with width  
 $\geq$  500 mm

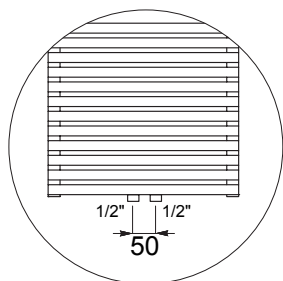
Art. nr. 5991990331127



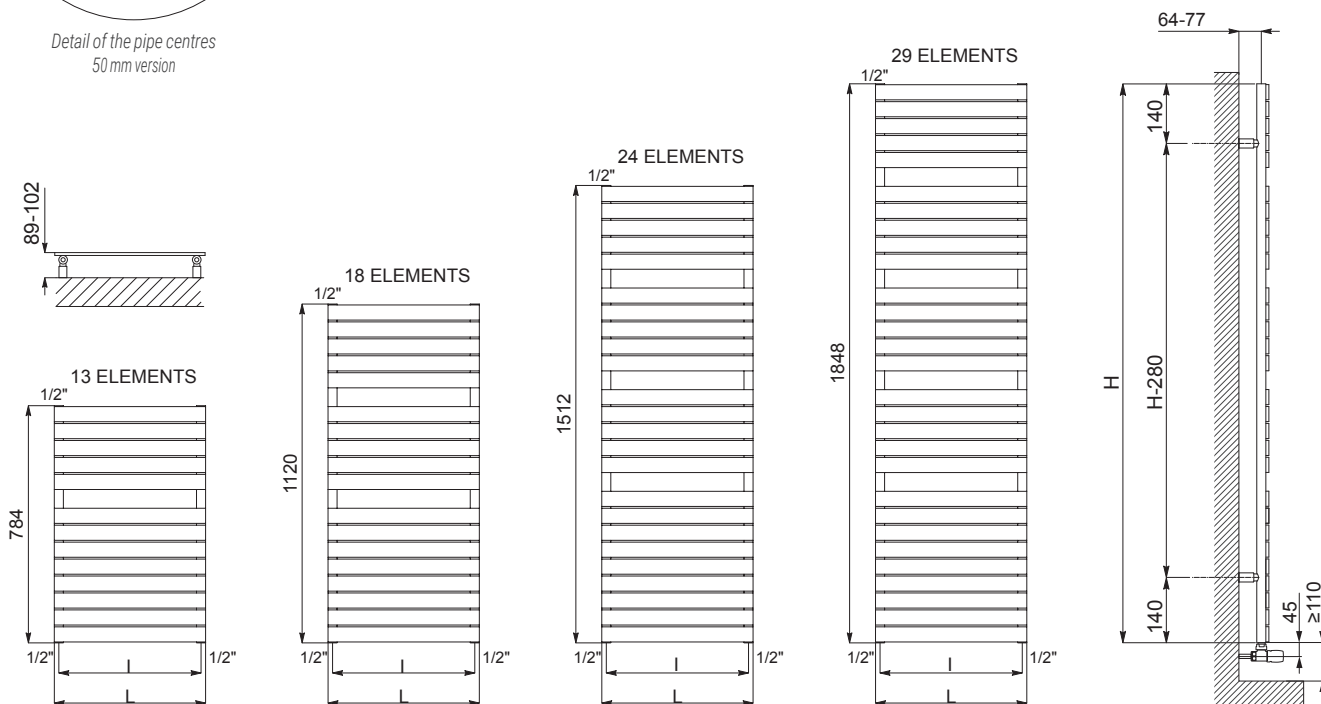
Quotes for square Kristal valves  
with thermostatic option

If ordered separately from the radiator, the accessories are available in standard white only.

Accessories and spare parts - see Accessories chapter



Detail of the pipe centres  
50 mm version



Quotes for Kristal valves

## DORY

DORY				Pipe Centres 50 mm		Thermal output [Watt]					Dual energy kit
Height [mm]	WIDTH L [mm]	Pipe Centres l [mm]	Art. nr.	Art. nr.	Dry Weight [Kg]	Surface [m2]	Water content [lt]	Δt=50°C	Δt=30°C	Exp. n	[Watt]
784	400	370	3551426100200	3551426100230	7,3	0,772	2,8	355	195	1,1761	400
	500	470	3551426100210	3551426100240	8,7	0,928	3,2	442	243	1,1679	500
1120	400	370	3551426100201	3551426100231	10,2	1,075	3,9	482	265	1,1741	500
	500	470	3551426100211	3551426100241	12,1	1,291	4,5	592	326	1,1693	700
	600	570	3551426100221	3551426100251	14,1	1,507	5,2	702	387	1,1660	700
1512	400	370	3551426100202	3551426100232	13,6	1,437	5,2	631	347	1,1716	700
	500	470	3551426100212	3551426100242	16,2	1,725	6,1	767	422	1,1709	900
	600	570	3551426100222	3551426100252	18,8	2,013	6,9	904	497	1,1704	900
1848	400	370	3551426100203	3551426100233	16,5	1,740	6,3	751	413	1,1696	900
	500	470	3551426100213	3551426100243	19,6	2,088	7,4	911	501	1,1722	900
	600	570	3551426100223	3551426100253	22,8	2,436	8,4	1071	588	1,1740	1200

Art. nr. are referred to colour WHITE R01 - RAL 9010 version.

For output at different Δt than 50°C, please refer to the following formula: desired output = output at Δt 50°C x (desired Δt/50)<sup>1,4</sup>n

ARDESIA®

TOWEL RAILS

ELECTRIC RADIATORS  
AND FAN HEATER

INOX RANGE

LIVING  
DESIGN RADIATORS

VENTILATED  
RADIATORS

MODELS FOR  
REPLACEMENT

MY WAY®  
SYSTEM

ACCESSORIES  
AND TECHNICAL  
SUPPORT