



LUCY 18 PLUS



EUROPEAN
WARRANTY

MATERIAL:

- Vertical collectors in painted mild steel \varnothing 30 mm.
- Double horizontal heating elements in painted mild steel \varnothing 18 mm.

FIXING KIT:

Brackets, airvent, hexagonal tool, plugs and screws for mounting suitable for use on compact or hollow brick, user notice.
The kit is certified from TÜV in compliance with VDI 6036-class 4.

PACKAGING:

Carton angular and profiles protected by a recyclable film in polyethylene. User notice included.

PAINTING PROCESS:

Painted with ecological epoxy powders. (Certificate DIN 55900-1,-2)

COLOURS:

Radiator and accessories: standard white colour RAL 9010-R01.
For other colours see Colour chart chapter.

ACCESSORIES:

See Accessories chapter

Functioning:	<input checked="" type="checkbox"/> Hot water	<input type="checkbox"/> Dual energy
--------------	---	--------------------------------------

P. Max: 8 bar	Functioning: hot water	T. Max: 110° C	Connections: 2 x 1/2" gas - 1 x 1/2" gas for airvent
---------------	------------------------	----------------	--

CERTIFICATIONS



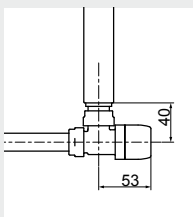
ACCESSORIES

Kristal valve square With thermostatic option White R01 - ral 9010



Copper conn. \varnothing 12/14/15
Art. nr. 5991990311161

Multilayer conn. \varnothing 16
Art. nr. 5991990311160



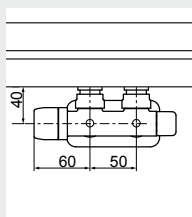
Quotes for square Kristal valves
with thermostatic option



Kristal valve square Pipe centres 50 mm right white R01 - ral 9010

Copper conn. \varnothing 12/14/15
Art. nr. 5991990311186

Multilayer conn. \varnothing 16
Art. nr. 5991990311185

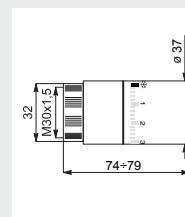


Quotes for square Kristal valves
with thermostatic option



White thermostatic head

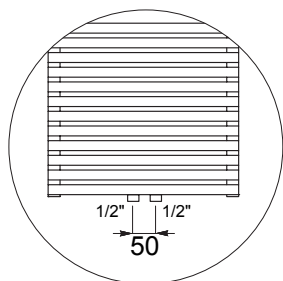
(Kit 2 pieces)
Art. nr. 5035270710016



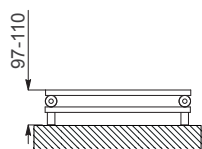
Thermostatic head quotes

If ordered separately from the radiator, the accessories are available in standard white only.

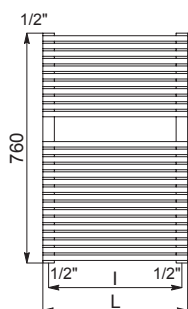
Accessories and spare parts - see Accessories chapter



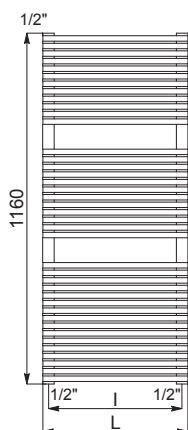
Detail of the pipe centres
50 mm version



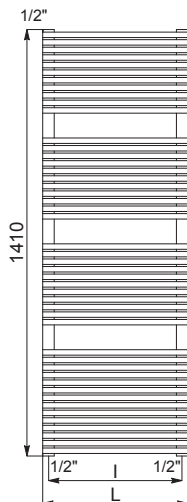
27+27 ELEMENTS



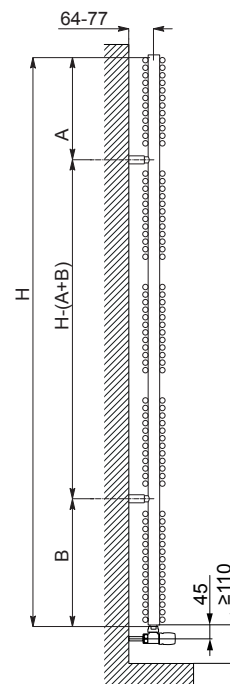
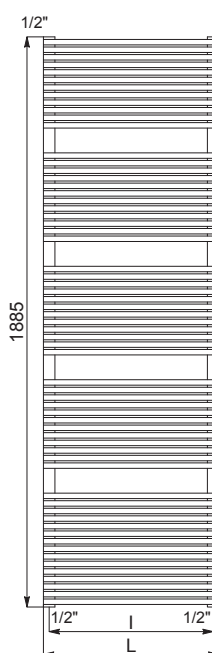
40+40 ELEMENTS



47+47 ELEMENTS



63+63 ELEMENTS



Quotes for Kristal valves

LUCY 18 PLUS

LUCY 18 PLUS				Pipe Centres 50 mm		Thermal output [Watt]					Dual energy kit
Height [mm]	WIDTH L [mm]	Pipe Centres I [mm]	Art. nr.	Art. nr.	Dry Weight [Kg]	Surface [m2]	Water content [lt]	Δt=50°C	Δt=30°C	Exp. n	[Watt]
760	430	400	3551406101300	3551406101314	12,7	1,4	5,1	565	298	1,2541	700
	480	450	3551406101304	3551406101318	14,0	1,6	5,6	711	377	1,2431	900
1160	430	400	3551406101301	3551406101315	19,5	1,2	7,9	821	432	1,2564	1200
	480	450	3551406101305	3551406101319	21,5	2,3	8,7	1018	538	1,2495	1200
	530	500	3551406101308	3551406101322	23,5	2,6	9,4	1215	643	1,2449	1200
	580	550	3551406101311	3551406101325	25,3	2,8	10,2	1609	854	1,2391	1200
1410	430	400	3551406101302	3551406101316	23,0	2,5	9,4	957	503	1,2576	1200
	480	450	3551406101306	3551406101320	25,4	2,8	10,2	1183	624	1,2529	1200
	530	500	3551406101309	3551406101323	27,2	3,0	11,3	1421	750	1,2498	1200
	580	550	3551406101312	3551406101326	30,2	3,3	12,0	1897	1004	1,2459	1200
1885	430	400	3551406101303	3551406101317	31,0	3,4	12,5	1268	666	1,2604	1200
	480	450	3551406101307	3551406101321	34,0	3,8	13,7	1565	822	1,2608	1200
	530	500	3551406101310	3551406101324	37,2	4,1	14,9	1861	977	1,2610	1200
	580	550	3551406101313	3551406101327	40,3	4,5	16,1	2042	1072	1,2621	1200

Art. nr. are referred to colour WHITE R01 - RAL 9010 version.

For output at different Δt than 50°C , please refer to the following formula: $\text{desired output} = \text{output at } \Delta t 50^{\circ}\text{C} \times (\text{desired } \Delta t/50)^{1,4}$